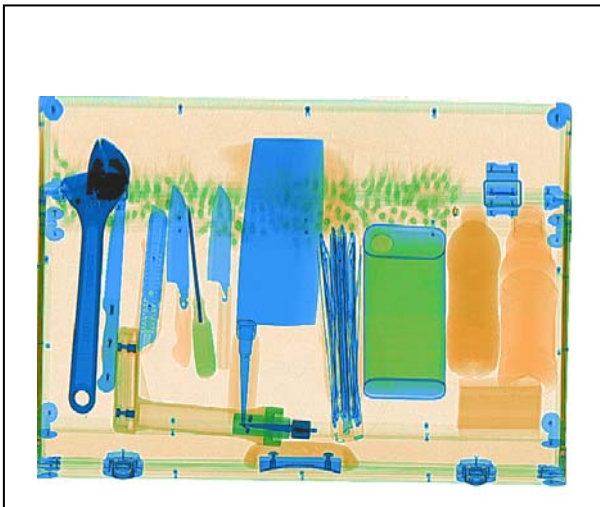
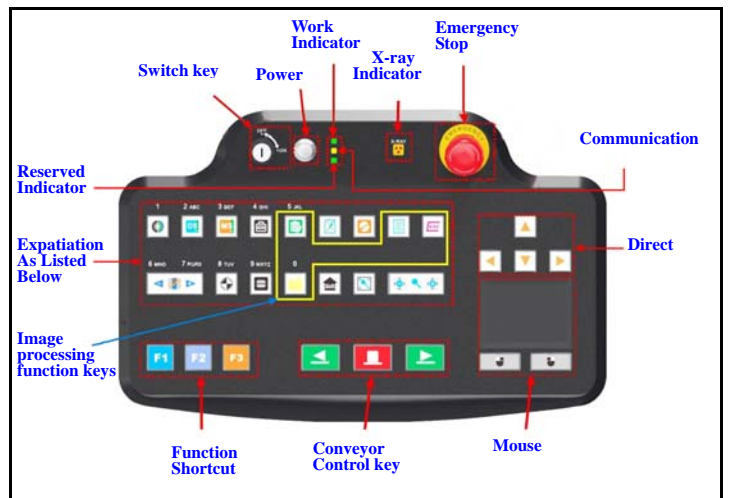




2MX-8065



High resolution image



Friendly operation keyboard

General Specification:

Tunnel Size: 810mm×655mm
Conveyor Speed: 0.22m/s
Conveyor height : 335mm
Conveyor Max Load:200kg
X ray Dose per inspection <1.14μSv
Wire Resolution:38AWG Guarantee 40 AWG typical
Spatial resolution Level: dia1.3mm,Vertical: dia1.3mm
Penetration: 28 mm steel guarantee, 30mm steel typical
Penetration Resolution :30AWG guarantee, 32AWG typical
Film Safety :Guarantee ASA/ISO1600 Film
X-ray Leakage: <0.5 μSv/h (at a distance of 5cm From external housing)

Image system:

Technical Principle: Dual-energy X-ray Imaging;
X-ray Sensor: L-Shaped Photodiode Array (**multi-energetic**) , 12bit Deep
Monitor: High Resolution Color, LCD Accord, 17inch
Image Display: High resolution of 1024 * 1280 pixel; Image Grey Level: 65536
Image Enhancement: 1-64times enlargement continuity, Color/BW, negative, high/low penetration, organic /inorganic Stripping, general enhancement, and pseudo color, etc.
Image Recall: All preceding images recallable, retrieval.
Explosives & Narcotics Detection: Explosives & narcotics alarm and highlight according to atomic number signature
High Density Region Alarm: Impenetrable region alarm and highlight, for possible concealing of threats and contrabands
Threat Image Projection: Inserting fictional, but realistic images of threat items into baggage during screening operation, for maintenance of vigilance, as well as training and assessment of image identification capability
Image Archive: Up to 100,000 images stored automatically, enable transferring to USB disk, and converting to JPG, BMP and other general formats
Miscellaneous Functions : Time/date display, counters, user management, system-on/X-ray-on timers, power on self test, built-in diagnostic facilities, dual-direction scanning, system log,etc.
Network Applications: Multiple remote applications available based on Ethernet LAN and windows platform, such as image centralized storage and identify, recheck workstation, and network TIP, etc (Optional) .
Images process: 24bit real time processing ,4colors analysis, Images displayed marked date and ID NO ,Count the number of bags ,Memory gray level:65536

Operating Environment:

Operation temperature/Humidity: 0°C-45°C/20%-95%(non-condensing)
Storage Temperature/Humidity: -40°C to 60°C/ 5%-95%(non-condensing)
Operation Power: 220VAC(±10%)50±3Hz (Optional: 100VAC,110VAC,120VAC,200VAC)
Power Consumption: 1.0KW (max), 0.7KW(working)
Noise: <58db
Dimensions (L×W×H) :2848.5mm x1095mm x1535.5 mm
Weight: 500Kg

X-ray generator:

Anode Voltage: 140kv
Anode power: 0.35mA
Generate angle: 80 degree upward
Brand: 2M Technology (own made)
Generate direct: from top to bottom
Cooling / Duty Cycle: Oil Cooling /100%

Other Characters:

Detect PCB board: UK brand Sensortech
Extension Rollers: customize size length
 Support card reader operator access
CD DVR/RW unit: Optional
Computer system: XP system
Monitor: 17 inch DELL two monitors

