

2MEXH-4219 Series

Large size explosion proof camera housing



Model :

2MEXH-4219 Series: Large size IP66 explosion proof camera housing, included wiper and sunshield .

Available models :

Model	Material
2MEXH-4219WS	AISI 304 stainless steel
2MEXH-4219WS-L	AISI 316L stainless steel

Features :

- IP66, NEMA-4X Enclosure rating
- Operating temperature range from -25°C to 60°C (-13°F to 140°F)
- Ex d IIC T6 Gb explosion-proof marking
- AISI 304/316L stainless steel construction (available)
- Wiper and sunshield included

Specifications

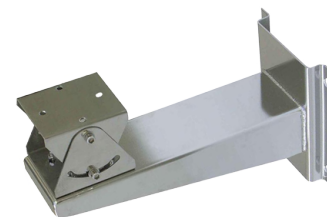
Atmospheric Pressure	80 kPa 106 kPa
Operating Ambient Temp	-25°C to 60°C (-13°F to 140°F)
Relative Humidity	5 % to 95 % nocondensing
Protection rating	<ul style="list-style-type: none"> ● Ex d IIC T6 Gb Explosin-proof marking ● IP66, NEMA-4X enclosure rating
Dimensions (W x H x L)	(420 x 195 x 194 mm) (16.54 x 7.68 x 7.64 In)
Internal Usable Size (W x H x L)	(300 x 80 x 80 mm) (11.81 x 3.15 x 3.15 In)
Window Viewing Area (Ø)	-
Weight	11 Kg (24.25 lb)
Material	<ul style="list-style-type: none"> ● AISI 304 stainless steel 2MEXH-4219WS ● AISI 316L stainless steel 2MEXH-4219WS-L
Heater Control	On at 1 °C ± 3 °C (34 °F ± 5 °F) (optional)

Matching Accessories :

- 2MEXB-2915: Explosion Proof Wall Housing Bracket (304)
- 2MEXPTB-3623: Heavy Explosion Proof Pan and Tilt Unit (304)
- 2MEXB-2915-L: Explosion Proof Wall Housing Bracket (316L)
- 2MEXPTB-3623-L: Heavy Explosion Proof Pan and Tilt Unit (316L)



2MEXPTB-3623
2MEXPTB-3623-L



2MEXB-2915
2MEXB-2915-L