



**Operations Control System
VMS with Display Monitor**

**Side rubber bumps to
slow down vehicles**



FEATURES:

- Portable and easy/quick installation
- Advanced linear CCD scanning technology
- High resolution complete color image of under the vehicle
- Weather proof scanning unit (IP68 the highest level)
- Anti-fog function
- Multilingual Graphical User Interface(GUI)
- Option: Automated License Plate Reader(ALPR)

CCD SCANNING

Maximum scanning rate	18kHz
Vehicle Speed	1-60 km/h, recommend < 30 km/h
View Angle	170 degrees
Scanner Data Line	10 m (Adjustable Length)
Lighting	160 W
Lighting Components	2 single sealed LED surface light sources, life 50000h
Load-Bearing Weight	30T
IP Rating	IP68 (the highest level)
Weight Of The Scanning Device	28 kg
Dimensions Of Device	450 x 400 x 88 mm

IMAGING SYSTEM

Technology	Linear array CCD scan technology and dynamic imaging of BW/color
Scanning Resolution	≥ 2048 pixels CCD / ≥ 4096 pixels CCD
Image Speed	<1 second
Image Display Mode	Large-format horizontal display
Image Storage Format	Standard BMP or JPEG
System Interface Language	Can be customized
Image Data Transmission	Network RJ45
Scene Image Display	≥ 1 channel
Image Search	Retrieve the image by date, time, license plate number, and images
Image Resolution	12000 × 6144
Automatic Scan	Display the image in 1s after the vehicle passes at a speed of 1-65km/h
Automatic Image Storage	Save no less than 10,000 pictures and delete the expired pictures automatically
Imaging Function	Adjust saturation, contrast, balance and sharpening, zoom in and out (1-16), and local enlargement

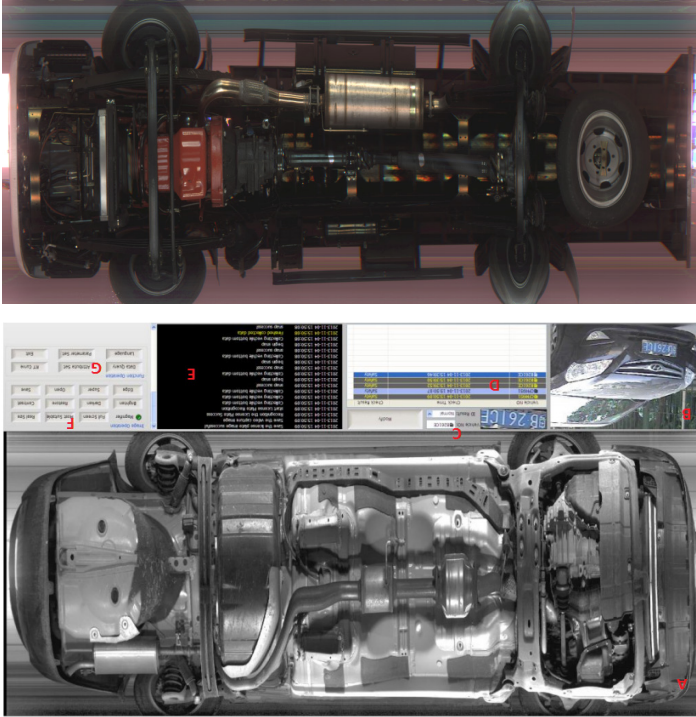
COMPUTER AND OTHER

Monitor	One 22-inch true color LCD monitor
Console	A console which can lock the display and keyboard
CPU	Intel Core Quad-Core Processor
RAM	DDR3, greater than 2GB
Hard Disk	500G High Speed Hard Disk
Graphics Card	DDR3, 192BIT Independent Graphics Card
Platform	Windows XP/ Windows 7

OPERATING ENVIRONMENT

Operating Temperature	-25°C ~ 60°C
Storage Temperature	-40°C ~ 75°C
Power Supply	AC110-240V 50~60Hz ±3Hz

EXAMPLE OF IMAGING:



- A. Under vehicle image display area: real-time display of vehicles at the detected image, historical images, and bottom of the vehicle under-body after treatment images.
- B. Live video area: Via external plate camera, display video which is automatically capture vehicle license plate images when the vehicle passing the detection zone.
- C. License plate number information display area: Displaying the detected vehicle license plate capturing photos with automatic identification of the results. Click [Modify] button can modify the number of recognition errors.
- D. Vehicle information list: Checking vehicle information in all day, including license plate number, the checking time, vehicle surveillance results.
- E. Real-time log information list: real-time display of the region need to run the process produces some log information to facilitate the use of personnel or maintenance personnel system view real-time operation of the system state.
- F. Image manipulation functional areas: the image to zoom; brighten, darken; edge enhancement, super-enhanced operation.
- G. Functional operating areas: the license plate camera and used to set the relevant parameters linear array camera, as well as the system language, real-time curve, historical data query functions.

EXAMPLE OF INSTALLED SYSTEM:



COMPONENTS

SUB SYSTEM	QTY	HARDWARE
Mobile vehicle scanning equipment	1 set	Camera
		Scanner frame
		Lighting system
		Vehicle sensor
Operating box	1 set	System host 22 inch monitor
Video monitoring	1 set	Camera
	1 set	Tripod
Under vehicle surveillance system software	1 set	
License plate number recognition system (optional)	1 set	

Operations Control System VMS with Display Monitor



Side rubber bumps to
slow down vehicles



APPLICATIONS

