

Overview:

The 2MX-100100HI is a specially designed x-ray inspection system with a tunnel opening of 39.37" x 39.37" inches. With the dual view technology, it shows clear images of both vertical and horizontal angles. It is used widely for screening large baggage and parcels at all security sites, including airports and customs locations.

Features:

- Dual view technology with images from two angles
- Radiation safe
- High resolution, high penetration and good image quality
- Multilingual operation
- Automatic built in test and self diagnosis
- High load-bearing capacity
- Threat alert and material classification
- Energy saving design
- One key turn off with patent
- Drugs and explosives detection
- Sens-Tech detection board and Hamamatsu detector

Specifications

PHYSICAL SPECIFICATIONS	
Tunnel Size	39.65"(W) x 39.69"(H) inches
Unit Weight	2976.24 lbs
Unit Size	153.9"(L) x 70.24"(W) x 79.94"(H) inches
Gross Weight	3527.4 lbs
Packing Size	#1: 115.75" x 85.83" x 85.04" inches #2: 44.09" x 35.43" x 55.5" inches

GENERAL SPECIFICATIONS

Conveyor Speed	0.22 m/s forward or backward
Conveyor Height	12.17" in
Conveyor Capacity	440.93 lbs
Frame Design	304 stainless steel, 2-5 mm cold rolled plate and square steel, double-layer staggered lead impregnated safety curtain
X-Ray Dose/Inspection	≤4.8μGy
X-Ray Leakage	≤0.5μGy/h at any point 5 cm outside the external surface. FDA standard is ≤5μGy/h
Steel Penetration	32mm guaranteed
Wire Resolution	Horizontal AWG38 / Vertical AWG36 guaranteed
Penetration Resolution	AWG30 guaranteed
Spatial Resolution:	1.3mm Horizontal, 1.3mm Vertical
Power Consumption	Max. 1.5KW
Noise	<60 dB
Film Safety	Guarantee ASA/ISO1600 Film

X-RAY GENERATOR (TWO)

Anode Voltage	160 KV
Beam Direction	Vertical and Horizontal
Cooling / Duty Cycle	Sealed oil cooling /100%

COMPUTER AND OTHER

Monitor	2 17-inch LCD monitors, 1280 x 1024
Console	A console which can lock the display and keyboard
CPU	Intel (R) i3 (R) 3.3GHz
RAM	4GB
Hard Disk	2TB
Keyboard	Special designed
Platform	Windows 10
Backup	Uninterrupted Power Supply
Electric Roller	Three-phase

X-RAY GENERATOR (TWO)

Anode Voltage	160 KV
Beam direction	Vertical and Horizontal
Cooling / Duty Cycle	Sealed oil cooling /100%

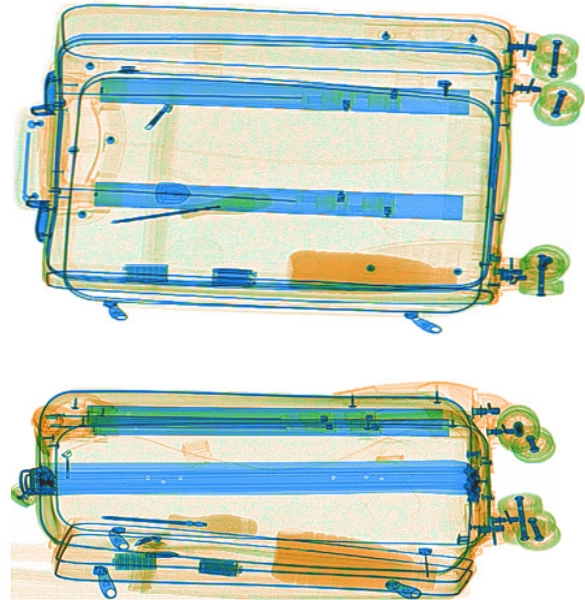
OPERATING ENVIRONMENT

OPS Temperature/ Humidity	5°C-40°C; 0%-90% (non-condensing)
Storage Temperature/ Humidity	-20°C to 60°C; 10%-90% (non-condensing)
Operation Power	220V (+10% ~ -15%) 50±3Hz Options: 100-130V, 200-250V, 60Hz
UPS for the Equipment	Options: 15mins, 30mins, 60mins etc

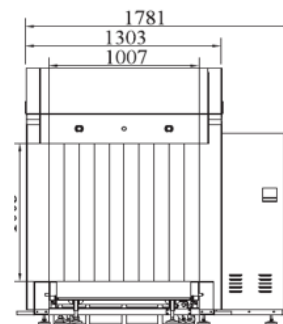
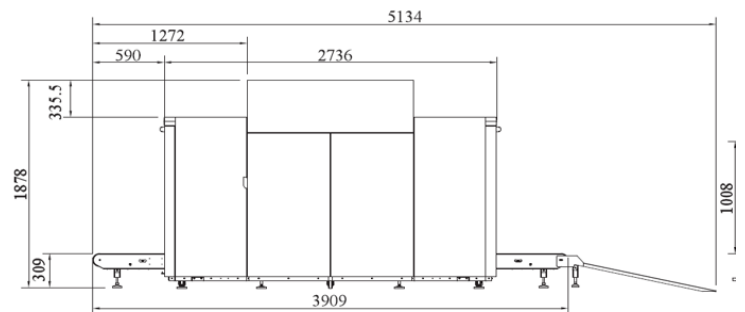
IMAGING SYSTEM

Detector	4352 channels in two L-Shaped Arrays
Image Processing	Color/BW imaging, local enhancement, high penetration, low penetration, super enhancement, organic stripping, inorganic stripping, reverse color, brightening, darkening, gray level change/variable contrast, continuously zoom maximum 64x, pseudo color imaging, organics enhancement, suspicious item alarm and notation, edge enhancement imaging, etc.
Explosives & Narcotics Detection	Suspicious organics highlight (atomic number Zeff=7,8,9)
Suspicious Alarm	Alarm and box line the suspicious objects including hard to penetrate material, explosives and drugs
Threat Image Projection (TIP)	Insertion of fictional, but realistic images of threatening items into baggage during screening operation, for maintenance of vigilance, as well as training and assessment of image identification capability
Image Recall	30 recallable images
Image Archive	Up to 50,000 images stored automatically, enable transferring to USB disk, and converting to JPG, BMP and other formats
Miscellaneous Functions	Time/date display, counters, user management, system-on/x-ray-on timers, power on self test, built-in diagnostic facilities, bi-direction scanning, forced scanning, image search and export, system setting, system log, system standby and simulated real-world training, etc.
Options	Intelligent roller, remote work station, network integration, video monitoring, face recognition and baggage integration, recheck station, additional roller table, etc.

Imaging



Dimensions



Keyboard

