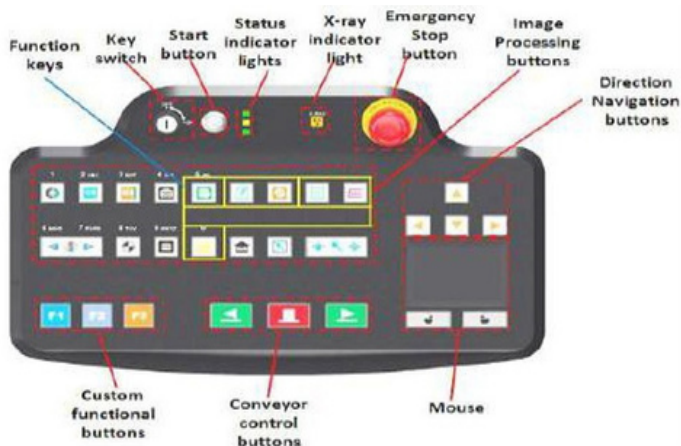




Features

- Multilingual operation
- Automatic built-in test and self-diagnosis
- Secure access key
- Uninterrupted power supply (UPS)
- Threat alert and material classification
- Auto archiving
- Network ready
- Energy saving design
- One key turn off
- Drugs and explosives inspection
- Indication of the date and time
- Baggage counter



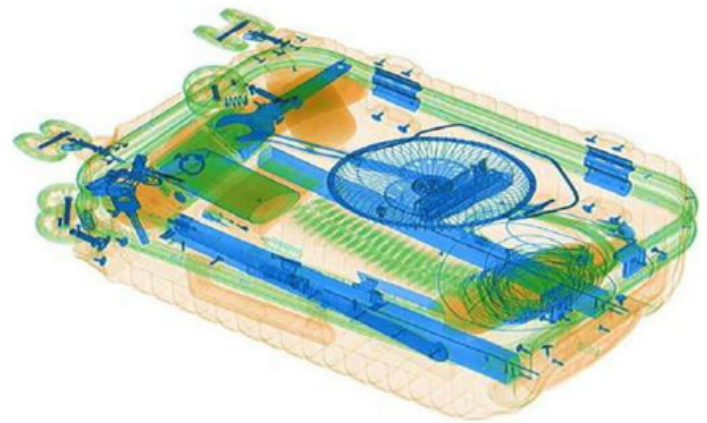
Specifications

PHYSICAL SPECIFICATIONS	
Tunnel Size (W x H)	1505 x 1800 mm / 59" x 70.9" (in)
Unit Weight	4000 kg / 8818 lbs
Unit Size (L x W x H)	7787 x 2423 x 2837 mm / 306.6" x 95.4" x 111.7"
Gross Weight	4500 kg / 9,921 lbs
Packing Size	#1: 515*252*300cm #2: 176*171*53cm #3: 176*171*53cm #4: 120*65*100cm
GENERAL SPECIFICATIONS	
Conveyor Speed	0.2 m/s Forward and Reverse
Conveyor Height	350 mm
Conveyor Capacity	2000 kg / 4409 lbs
X-Ray Dose Per Inspection	≤4.8μSv
X-Ray Leakage	≤1μSv/h at any point 5 cm outside the external surface. FDA standard is ≤5μSv/h
Penetration	Typical 30/32/34 mm
Wire Resolution	AWG36
Penetration Resolution	AWG30
Spatial Resolution	Typical Ø1.3 mm, Verical Ø1.3 mm
Power Consumption	Max. 2.5 kW
Noise	<60 dB
Film Safety	Guarantee ASA/ISO1600 Film
IMAGE SYSTEM	
X-ray Sensor	L-Shaped Photo diode Array (multi-energetic), 16-bit deep
Image Display	High resolution of 1024 × 1280 pixel; Image Grey Level: 4096
Image Enhancement	1-64 times enlargement continuity, Color/BW, negative, high/low penetration, organic/inorganic stripping, general enhancement, and pseudo color, etc.
Image Recall	All preceding images recallable, retrieval
Explosives and Narcotic Detection	Explosives & narcotics alarm and highlight according to atomic number signature
High Density Region Alarm	Inpenetrable region alarm and highlight, for possible concealing of threats and contrabands

Specifications

Threat Image Projection (TIP)	Inserting fictional, but realistic images of threat items into baggage during screening operations for maintenance of vigilance, as well as training and assessment of image identification capability
Image Archive	Up to 200,000 images stored automatically, enable transferring to USB disk, and converting to JPG, BMP, and other general formats
Network Applications	Multiple remote applications available based on Ethernet LAN and windows platform, such as image centralized storage and identify, recheck workstation, and network TIP, etc. (Optional)
Image Process	24-bit real time processing, 4 colors analysis, Images displayed marked date and ID NO, count the number of bags
OPERATING ENVIRONMENT	
Operating Temperature	5°C to 40°C
Operating Humidity	0%–90% (non-condensing)
Storage Temperature	-20°C to 60°C
Operating Humidity	10%–90% (non-condensing)
Power	220 VAC (+10%) 50±3 Hz Options: 100 VAC, 110 VAC, 120 VAC, 200 VAC
UPS	15 mins, 30 mins, 60 mins, etc. optional
COMPUTER AND OTHER	
Monitor	(2) Monitors - High Resolution Color, LCD Accord, 21.5 inch
Hard Disk	2T
Ram	4GB
Electric roller	Three-phase
CPU	Intel (R) i3 (R) 3.3GHz
Storage	Up to 2 GB
COMPLIANCE	
Certificates	ISO19001; ISO14001; OHSMS18001; CE

Imaging



Dimensions

