

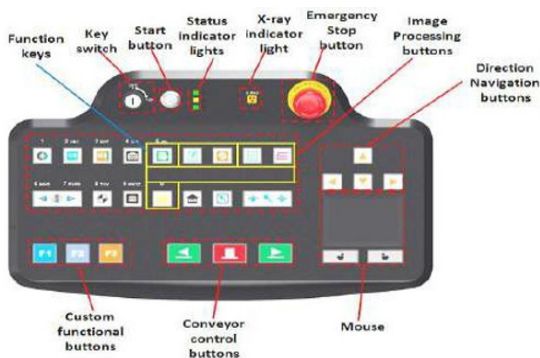
Introduction

The 2MX-150180DH is heavy duty x-ray inspection system with a tunnel opening of 59" x 71" inches. This scanner is designed for screening crates, cargo and pallet sized objects at all security sites, including airports and customs locations.

Features

- Radiation safe
- High resolution, high penetration and good image quality
- Multilingual operation
- Automatic built in test and self diagnosis
- Super strong load-bearing capacity
- Threat alert and material classification
- Energy saving design
- One key turn off with patent
- Drugs and explosives detection
- Sens-Tech detection board and Hamamatsu detector

Keyboard

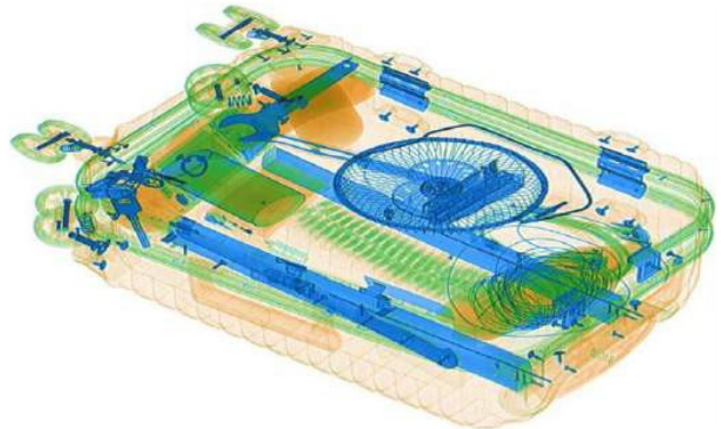


Specifications

PHYSICAL SPECIFICATIONS	
Tunnel Size (LxW)	1505 x 1800(mm)/59.3" x 70.9" (in.)
Unit Weight	3100 kg/6834.3 lbs
Unit Size (LxWxH)	7127 x 2422 x 2338 (mm)/280.6" x 95.4 x 92.05" (in.)
Gross Weight	3100 kg/6834.3 lbs (Packet on wooden pallet)
Packing Size	#1: 463 x 273 x 240 (cm)/182.3" x 107.5" x 94.5" (in.) #2: 176 x 171 x 53 (cm)/69.3" x 67.3" x 20.9" (in.) #3: 176 x 171 x 53 (cm)/69.3" x 67.3" x 20.9" (in.) #4: 113 x 89 x 142 (cm)/182.3" x 35" x 55.9" (in.)
GENERAL SPECIFICATIONS	
Conveyor Speed	0.2 m/s (0.66 ft/s) forward and reverse
Conveyor Height	350 mm
Conveyor Capacity	2000 kg/4409.2 lbs
Frame Materials	304 stainless steel, 2-5mm cold rolled plate and square steel, double-layer staggered lead impregnated safety curtain
X-ray Dose/Inspection	≤4.5μSv
X-ray Leakage	≤1μSv/h at any point 5 cm outside the external surface. FDA standard is ≤5μSv/h
Steel Penetration	34 mm guaranteed
Wire Resolution	AWG38 guaranteed
Penetration Resolution	AWG32 guaranteed
Spatial Resolution	1.3mm Horizontal, 1.3mm Vertical
Power Consumption	Max. 2KW
Noise	<60 dB
Film Safety	Guarantee ASA/ISO1600 Film
X-RAY GENERATOR (SINGLE)	
Anode Voltage	160 KV
Beam direction	Horizontal
Cooling / Duty Cycle	Sealed oil cooling /100%
COMPUTER AND OTHER	
Monitor	2x 17" inch LCD monitors, 1280 x 1024
Console	One console desk
CPU	Intel (R) i3 (R) 3.3GHz
RAM	4GB
Hard Disk	2TB
Keyboard	Special Design
Platform	Windows® 10
Backup	Uninterrupted power supply (UPS)
Electric Roller	Three-phase
IMAGING SYSTEM	
Detector	3712 channels in an L-Shaped Array
Image Processing	Color/black and white imaging, local enhancement, high penetration, low penetration, super enhancement, organic stripping, inorganic stripping, reverse color, brightening, darkening, gray level scan/variable density, continuously zoom maximum 64x, pseudo color imaging, organics enhancement, suspicious item alarm and notation, edge enhancement imaging, etc.
Explosives & Narcotics Detection	Suspicious organics highlight (atomic number Zeff=7,8,9)

Suspicious Alarm	Alarm and box line the suspicious objects including hard to penetrate material, explosives and drugs
Threat Image Projection (TIP)	Insertion of fictional but realistic images of threatening items into baggage during screening operation for training purposes to assess image identification capabilities
Image Pullback	30 images
Image Archive	Up to 100,000 images stored automatically, can be transferred to a USB disk, and converted to JPG, BMP and other general formats
Miscellaneous Functions	Time/date display, counters, user management, system on/x-ray on timers, power on self test, built-in diagnostic facilities, bi-directional scanning, forced scanning, image search and export, system setting, system log, system standby and simulation training, etc.
Options	Intelligent roller, remote work station, network integration, video monitoring, face recognition and baggage integration, recheck station, additional roller table, etc.
OPERATING ENVIRONMENT	
Operation Temperature	5°C to 40°C (41°F to 104°F)/0%-90%(non-condensing)
Storage Temperature	-20°C to 140°C (-4°F to 104°F) /10%-90%(non-condensing)
Operation Power	220V(10%~ -15%) 50±3Hz (Options: 100-130V, 200-250V, 60Hz)
UPS (Optional)	Options: 15mins, 30mins, 60mins etc.

Imaging



*Product specifications and availability are subject to change without notice.

Dimensions

