



**Overview:**

- Multilingual operation
- Automatic built in test and self diagnosis
- Secure access key
- Threat alert and material classification
- Auto archiving
- Energy saving design
- One key turn off
- Drugs and explosives inspection
- Indication of the date and time
- Baggage counter

**Overview:**

PHYSICAL SPECIFICATIONS	
Unit Weight (lbs)	992.1
Unit Size in Pallet (mm)	82.42" x 35.51" x 53.7" (L x W x H) (inches)
Gross Weight	1543.24 lbs
Packing Size	#1: 92.1" x 43.3" x 62.9" (in) #2: 34.3" x 34.3" x 55.9" (in)
GENERAL SPECIFICATIONS	
Conveyor Speed (m/s)	0.22
Conveyor Height (in)	27.6"
Conveyor Max Load (lbs)	330.7 lbs
X-ray Dose Per Each Inspection	≤2.5 μGy
X-ray Leakage	<1μGy/h at any point 1.97" inches outside the external surface
Penetration	30 mm steel (1.18" in)
Penetration Resolution	dia 0.202mm copper wire (AWG32) under three-step aluminum wedge 9.5mm, 15.9mm, 22.2mm
Spatial Resolution:	Horizontal: dia 1.0mm, Vertical: dia 1.0mm
Power Consumption	Max. 800W
Noise	<60 dB
Film Safety	Guarantee ASA/ISO1600 Film
X-RAY GENERATOR (SINGLE)	
Anode Voltage	140 KV
Ray direction	Upward
Cooling /Duty Cycle	Sealed oil cooling /100%
IMAGE SYSTEM	
X-ray Sensor	L-Shaped Photo-diode Array, 12bit deep
Images Process	24bit real time processing ,4colors analysis, Images displayed marked date and ID No., Count the number of bags
Image Display	High resolution of 1024 x 1280 pixel; Image Grey Level: 4096
Image Enhancement	1-16times enlargement continuity, Color/BW, negative, high/low penetration enhancement, brightening, darkening, gray level scan, super enhancement, elimination of organics/inorganics, local enhancement, pseudo color processing, edge enhancement, etc.
Explosives & Narcotics Detection	Suspicious organics highlight(atomic number Zeff=7,8,9)
Suspicious Alarm	Alarm and box line the suspicious objects including hard to penetrate material, explosives and drugs
Threat Image Projection (TIP)	Insertion of fictional, but realistic images of threatening items into baggage during screening operation, for maintenance of vigilance, as well as training and assessment of image identification capability
Image Recall	30 recallable images
Image Archive	Up to 100,000 images stored automatically, enable transferring to USB disk, and converting to JPG format
Miscellaneous Functions	Time/date display, counters, user management, system-on/X-ray-on timers, power on self test, built-in diagnostic facilities, system log, system standby and stimulant training, etc.
Options	Dual-direction scanning, intelligent roller, etc.

### OPERATING ENVIRONMENT

<b>Operation Temperature/Humidity</b>	5°C-40°C / 0%-90% (non-condensing)
<b>Storage Temperature/Humidity</b>	-20°C to 60°C / 10%-90% (non-condensing)
<b>Operation Power</b>	220VAC (±10%) 50±3Hz (Optional: 100VAC, 110VAC, 120VAC, 200VAC)
<b>UPS</b>	Options: 15mins, 30mins, 60mins etc

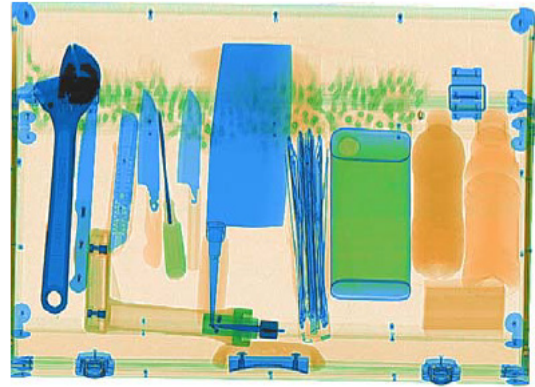
### COMPUTER AND OTHER

<b>Monitor</b>	1280 x 1024 LCD 17inch color monitor with one console desk
<b>RAM</b>	1GB
<b>Hard Disk</b>	500G
<b>Keyboard</b>	Special designed
<b>System</b>	Embedded Linux operating system, multi-core ARM, stable and reliable
<b>Electric Roller</b>	Three-phase

### COMPLIANCE

<b>International</b>	* ISO19001; ISO14001; OHSMS18001; * CE RoHS * FDA FCC
----------------------	---

### Imaging



### Dimensions

