

Features

- Multilingual operation
- Automatic built-in test and self diagnosis
- Secure access key
- Uninterruptible power supply (UPS) for computer
- Threat alert and material classification
- Auto archiving
- Energy saving design
- One-key turn off
- Drugs and explosives inspection
- Indication of the date and time
- Baggage counter
- Sens-Tech detection board and Hamamatsu detector

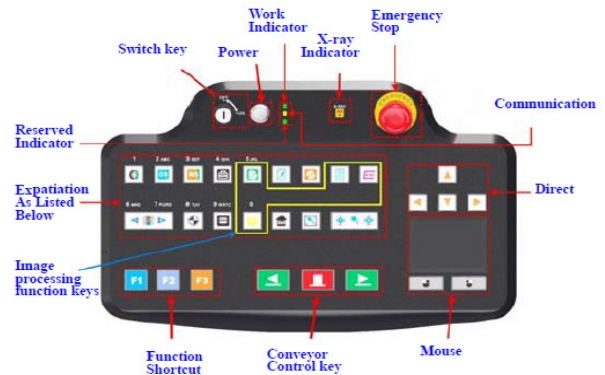
Features

GENERAL	
Tunnel Size (LxW)	800 x 650 (mm)/ 31.5" x 25.6" (in.)
Conveyor Speed	0.22/0.72 ft/s
Conveyor Height	341 (mm) /13.4" (in.)
Conveyor Max Load	200 kgs/440.9 lbs
X-ray Dose Per Inspection	≤4μSv
Wire Resolution	dia. 0.102mm copper wire (AWG38)
Spatial Resolution Level	dia.1.3mm, Vertical: dia. 1.3mm
Penetration	28 mm steel guarantee, 30mm steel typical
Penetration Resolution	dia. 0.202mm copper wire (AWG32) under three-step aluminum wedge 9.5mm, 15.9mm, 22.2mm
Spatial Resolution	Horizontal: dia. 1.3mm, Vertical: dia. 1.3mm
Noise	<60 dB
Film Safety	Guarantee ASA/ISO1600 Film
IMAGE SYSTEM	
X-ray Sensor	L-Shaped photodiode array, 12 bit deep
Images Process	24 bit real time processing ,4colors analysis, Images displayed marked date and ID No., Count the number of bags
Image Display	High resolution of 1024 x 1280 pixel; Image Grey Level: 4096
Image Enhancement	1-64times enlargement continuity, Color/BW, negative, high/low penetration enhancement, brightening, darkening, gray level scan, super enhancement, elimination of organic/inorganic materials, local enhancement, pseudo color processing, edge enhancement, etc.
Image Recall	30 images recallable
Explosives & Narcotics Detection	Suspicious organics highlight(atomic number Zeff=7,8,9)
Alarm	Alarm will sound with a box outline of the suspicious object(s) including hard to penetrate material, explosives and drugs
Threat Image Projection (TIP)	Insertion of fictional but realistic images of threatening items into baggage during screening operation for training purposes to assess image identification capabilities
Image Archive	Up to 50,000 images stored automatically, enable transferring to USB disk, and converting to JPG, BMP and other general formats
Miscellaneous Functions	Time/date display, counters, user management, system on/ X-ray on timers, power on self-test, built-in diagnostics, dual-directional scanning, system log, system standby and stimulation training, etc.
Network Applications (Optional)	Multiple remote applications available based on Ethernet LAN and windows platform, such as image centralized storage and identify, recheck workstation etc.
X-RAY GENERATOR:	
Anode Voltage	140-160 KV adjustable
Ray Direction	Downward
Cooling/Duty Cycle	Oil Cooling /100%
CONTROL SYSTEM	
Monitor	2x 17" in. LCD monitors, 1280 x 1024, one console desk
RAM	4GB
Hard Disk	2TB
Keyboard	Special design
System	Windows 10
Electric Roller	Three-phase

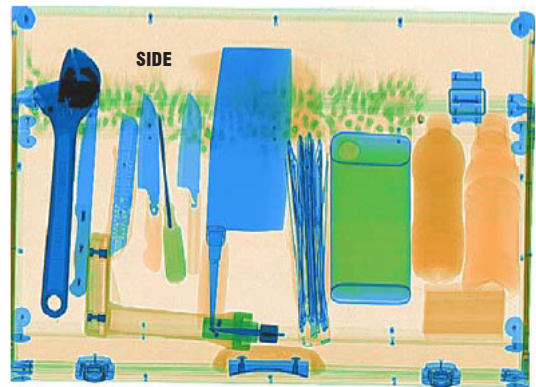
OPERATING ENVIRONMENT

Operation Temperature/ Humidity	5°C to 40°C (41°F to 104°F)/0%-90% (non-condensing)
Storage Temperature/ Humidity	-20°C to 60°C (-4°F to 140°F)/ 10%-90%(non-condensing)
Operation Power	220VAC(±10%) 50±3Hz (Optional: 100VAC,110VAC,120VAC,200VAC)
Power Consumption	1.0KW
UPS	Options: 15mins, 30mins, 60mins etc
Dimensions (LxWxH)	2848.5 x 1095 x 1536 (mm)/112.1" x 43.1" x 60.5" (in.)
Weight	640 kgs/1410.9 lbs
Gross Weight	800 kgs/1763.7 lbs
Packing Size	#1: 212 x 122 x 177 (cm)/83.5" x 48" x 69.7" (in) #2: 122 x 90 x 141 (cm)/48" x 35.4" x 55.5" (in.)
COMPLIANCE	
Certifications	* ISO19001; ISO14001; OHSMS18001; * CE RoHS * FDA FCC

Keyboard

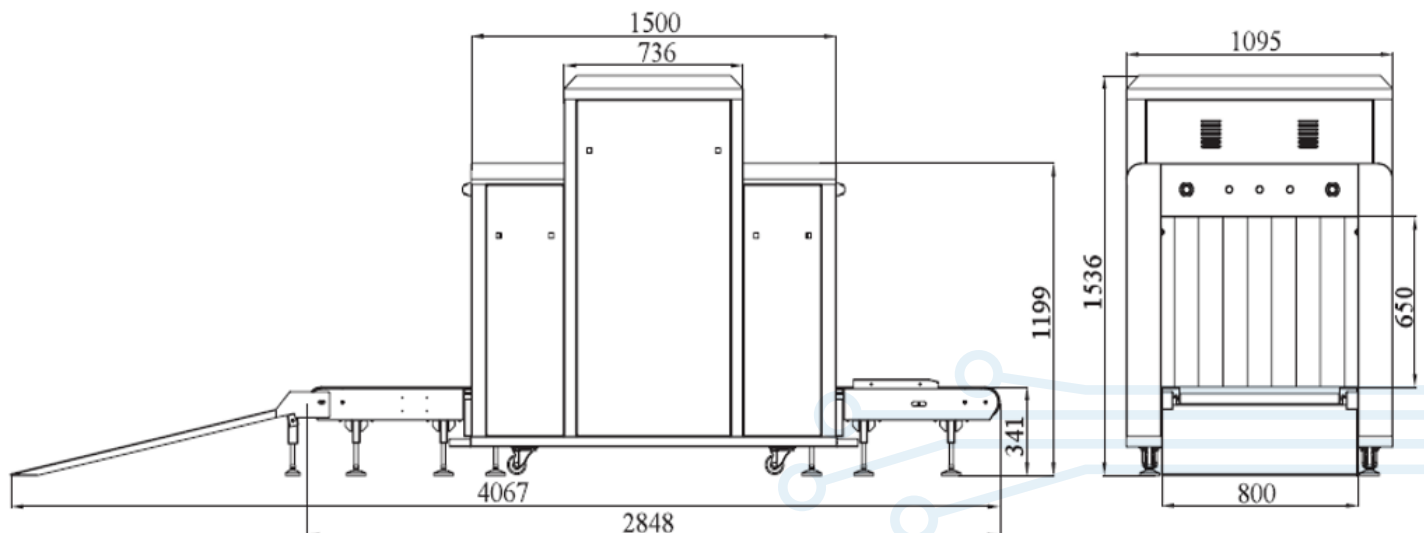


Imaging



*Product specifications and availability are subject to change without notice.

Dimensions



REV04,15/2021