

2MEXH-3616WS-L

Small Size Explosion Proof Camera Housing 316L



Model :

2MEXH-3616WS-L: Small size IP-66 explosion proof camera housing made with 316L stainless steel, and sun shield included.

Available models :

Model	Material
2MEXH-3616WS	AISI 304 stainless steel
2MEXH-3616WS-L	AISI 316L stainless steel

Features :

- IP-66, NEMA-4X Enclosure rating
- Operating temperature range from -25°C to 60°C (-13°F to 140°F)
- Ex d IIC T6 Gb explosion-proof marking
- AISI 304/316L stainless steel construction (available)
- Wiper and sun shield included

Specifications

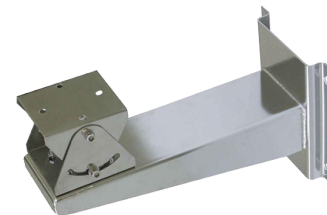
Atmospheric Pressure	80 kPa 106 kPa
Operating Ambient Temp	-25°C to 60°C (-13°F to 140°F)
Relative Humidity	5 % to 95 % nocondensing
Protection rating	<ul style="list-style-type: none"> ● Ex d IIC T6 Gb Explosin-proof marking ● IP66, NEMA-4X enclosure rating
Dimensions (W x H x L)	(365.5 x 163 x 169.5 mm) (14.39 x 6.42 x 6.67 In)
Internal Usable Size (W x H x L)	(260 x 80 x 80 mm) (10.24 x 3.15 x 3.15 In)
Window Viewing Area (Ø)	-
Weight	6 Kg (13.23 lb)
Material	<ul style="list-style-type: none"> ● AISI 304 stainless steel 2MEXH-3616WS ● AISI 316L stainless steel 2MEXH-3616WS-L
Heater Control	On at 1 °C ± 3 °C (34 °F ± 5 °F) (optional)
Input power	220 V AC, 50 Hz (optional)

Matching Accessories :

- 2MEXB-2915: Explosion Proof Wall Housing Bracket (304)
- 2MEXPTB-3623: Heavy Explosion Proof Pan and Tilt Unit (304)
- 2MEXB-2915-L: Explosion Proof Wall Housing Bracket (316L)
- 2MEXPTB-3623-L: Heavy Explosion Proof Pan and Tilt Unit (316L)



2MEXPTB-3623
2MEXPTB-3623-L



2MEXB-2915
2MEXB-2915-L

2M Technologies Co., Ltd.

802 Greenview Dr, Ste 100
Grand Prairie T, 75050
USA Tel: +1 972 206-1212
Email: Sales@2Mtechnology.net
WWW.2Mtechnology.net