

2MEXH-4219IR40-L

Explosion proof camera housing,
with 40m IR LED illuminator 316L



Model :

2MEXH-4219IR40-L: IP68 explosion proof camera housing with 40 m IR LED illuminator

Available models :

Model	Material
2MEXH-4219IR40	AISI 304 stainless steel
2MEXH-4219IR40-L	AISI 316L stainless steel

Features :

- IP68, NEMA-6P Enclosure rating
- Built-in IR 40 m (131.23 ft)
- Operating temperature range from -25°C to 60°C (-13°F to 140°F)
- Ex d IIC T6 Gb explosion-proof marking
- AISI 304/316L stainless steel construction (available)

Specifications

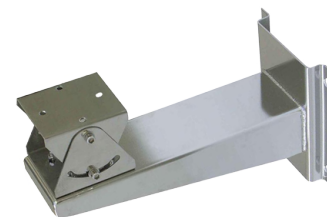
Atmospheric Pressure	80 kPa 106 kPa
Operating Ambient Temp	-25°C to 60°C (-13°F to 140°F)
Relative Humidity	5 % to 95 % no condensing
Input Power	85 V AC to 265 V AC, 50 Hz (optional)
Protection rating	<ul style="list-style-type: none"> • Ex d IIC T6 Gb Explosin-proof marking • IP68, NEMA-6P enclosure rating
Dimensions (W x H x L)	(420 x 195 x 194 mm) (16.54 x 7.68 x 7.64 In)
Internal Usable Size (W x H x L)	(160 x 75 x 75 mm) (6.30 x 2.95 x 2.95 In)
Window Viewing Area (Ø)	36 mm (1.42 in)
Weight	5.6 Kg (12.35 lb)
Material	<ul style="list-style-type: none"> • AISI 304 stainless steel 2MEXH-4219IR40 • AISI 316L stainless steel 2MEXH-4219IR40-L
Heater Control	On at 1 °C ± 3 °C (34 °F ± 5 °F) (optional)
IR Wave Length	850 nm to 940 nm
IR Distance	40 m (131.23 ft)
IR H.V. Angle	30° to 60°
Output	AV/Twisted-pair

Matching Accessories :

- 2MEXB-2915: Explosion Proof Wall Housing Bracket (304)
 2MEXPTB-3623: Heavy Explosion Proof Pan and Tilt Unit (304)
 2MEXB-2915-L: Explosion Proof Wall Housing Bracket (316L)
 2MEXPTB-3623-L: Heavy Explosion Proof Pan and Tilt Unit (316L)



2MEXPTB-3623
2MEXPTB-3623-L



2MEXB-2915
2MEXB-2915-L

2M Technologies Co., Ltd.

802 Greenview Dr, Ste 100
 Grand Prairie T, 75050
 USA Tel: +1 972 206-1212
 Email: Sales@2Mtechnology.net
 WWW.2mtechnology.net