

Brushless controller debugging instructions

There are 3 digital display and 3 independent operation buttons can be debugged and status monitored.

Button Function

- ▲ Add / move up, data and menu settings (long press to quickly add), data does not carry
 - ◀ Shift / exit, data shift, long press (1.2 seconds) to return
 - ▶ Set / hold, short press to confirm
- Forward is the same direction as tap the turnstile forward
Reverse is equivalent to reverse as

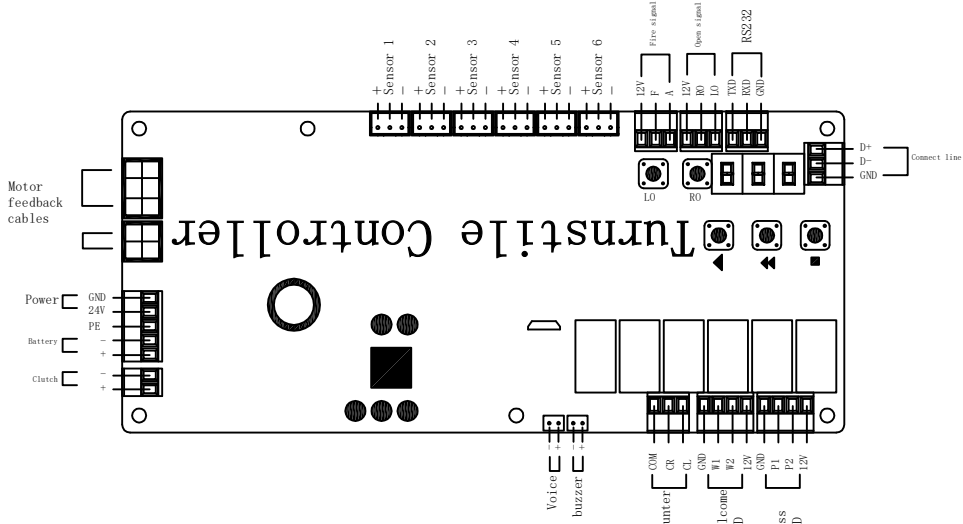
Menu display and functions

d-groupErr is the alarm information, PEp is the traffic alarm information, 4 is the gate status, 8x1 is the axis status, 5x8 is the traffic status
415 is the status of the motor, 10 is the status of the motor control, 10 is status (passing, welcome light part, count output), Irl is infrared finet status.
Ifr is infrared finet status.
Menu display, function
Group A rop open right (reverse opening), Clo is closes,
LeP opens left (positive opening), SE0 is to set the zero point, RST is to reset
Remarks: P0p parameter must be 1 master 1 slave, otherwise the communication is abnormal, P0p parameter must be 1 master 1 slave, otherwise the communication is abnormal, Setting P01 parameter setting: p-setting group (password: 1888)
Note: Except for F00 and R01, which need to be set separately, when other parameters are set for the master, the slave will also be synchronized.
Function code, function code name, minimum value, maximum value, unit, remarks
F00 Master-slave selection 0/1 0:master, 1:slave
F01 Motor rotation direction selection 0/1 0:CCW (reverse rotation), 1:CW (forward rotation)
F02 Acrylic length:300mm, 1-tempered glass 300mm, 2-acrylic 400mm, 3-tempered glass 400mm, 4-acrylic 500mm, 5-tempered glass 500mm, 6-acrylic 600mm, 7-tempered glass 600mm
F03 Open/close speed (%) 1-100%, percentage of motor rated speed (data conversion)
F04 acceleration 1-200 RPM / ms, deceleration = acceleration / 2;
F05 Running blocking current (A, lb, 0-900, adjustment unit 0.1A, 0 means no blocking judgment)
F06 Change blocking current 0-100 Adjustment unit 0.1A
F07 Speed ratio
F08 Emergency stop mode 0-1, 0 means unblocked clutch, 1 means locked clutch
F09 Strong push angle 1-900, adjustment unit 0.1 ° ;
F10 Allowable deviation in place = strong push angle -1 ;
F11 Change speed 1-80% of motor rated speed
F12 blocking mode selection 0-2, 0 means recovering to the previous state, 1 means recovering at an angle, 2 means speed, torque decreases
F13 Emergency stop mode 0-1, 0 means unblocked clutch, 1 means locked clutch
F16 Gate mode 0-10
0: Aging mode 1: Two-way swipe card 2: Two-way freedom 3: Two-way prohibition
4: Entry swipe card + exit free; 5: Entry swipe card+ exit prohibition
6: Entry free + exit swipe 7: Entry free + exit prohibition
F17 Left prohibition 0-1, 0 means no left prohibition, 1 means left prohibition
F18 Infrared type 0-3, 0 means infrared, 1 means infrared, 2 means infrared
F18 memory card enable 0/1, 0 means disable, 1 means enable
F19 Normally open normally closed state 0/1, 0 means normally closed, 1 means normally open
F20 Maximum unannounced passage time 10-999, adjustment unit is
F21 Allow card swipe in the channel 0/1, 0 means not allowed, 1 means allowed
F22 Weather closed backward 0/1, 0 means not closed, 1 means closed
F23 Voice volume 0-15
F24 Motor delay time 0-999, adjustment unit 10ms
F25 Whether to use the clutch when closed 0/1, 0: not used 1: used
F26 Is the clutch locked 0-1 if 111egally intruded, 0: not locked 1: locked
F27 Set infrared filter time 0-500, adjustment unit 10ms
F28 Allow delay after card swiping 0-500, adjustment unit 10ms
F29 Fire alarm door opening direction 0/1, 0: exit door opening; 1: entry door opening
F30 Opening delay time is 0-500, the adjustment unit is 10ms
F31 Stop time in channel 0-999, adjustment unit is 10ms
F32 Stop time in channel 0-999, adjustment unit is 1s
F33 Controller type 0-3, 0-swing gate double arm, 1-swing gate single arm, 2-wing gate double arm, 3-wing gate single arm
F34 Trigger anti-punch delay setting 0-999 ms
F35 Exit anti-punch delay setting 0-999 ms
F36 Whether to use the buzzer 0-1, 0 means no buzzer, 1 means buzzer
F37 Infrared type 0-1, 0 means 2 pairs, 1 means 6 pairs
F38 Opening door with or without buzzer prompt tone 0/1, 0: none (off) 1: yes (on)
F39 Chinese and English voice 0/1, 0 means Chinese, 1 means English
F46 RBZ Light output enable 0/1 0: pass light / welcome light logic, 1: RBZ Light Logic
F47 Band rate setting (RS232) 0- 5 4800, 9600, 19200, 38400, 57600, 115200
Voice content table

By setting F39 (Chinese and English voice) parameters,

you can switch between Chinese and English voice.

- 0 Welcome
- 1 Do not enter, authorized personnel only
- 3 Don't follow
- 5 Passing from opposite direction
- 7 Initialization failure
- 9 Master communication error
- 10 Slave communication error
- 11 Slave communication error
- 12 Master controller
- 13 Slave controller
- 14 Welcome home
- 15 Welcome home
- 16 Thank you for your patronage
- 17 You are under surveillance
- 18 Construction area! Hard hats must be worn
- 19 Only one passenger allowed at one time
- 20 Authorized personnel only
- 21 Closed off
- 22 Please authorize outside the line



Brushless controller debugging instructions

There are 3 digital display and 3 independent operation buttons can be debugged and status monitored.

Button Function

- ▲ Add / move up, data and menu settings (long press to quickly add), data does not carry
 - ◀ Shift / exit, data shift, long press (1.2 seconds) to return
 - ▶ Set / hold, short press to confirm
- Forward is the same direction as tap the turnstile forward
Reverse is equivalent to reverse as

Menu display and functions

d-groupErr is the alarm information, PEp is the traffic alarm information, 4 is the gate status, 8x1 is the axis status, 5x8 is the traffic status
415 is the status of the motor, 10 is the status of the motor control, 10 is status (passing, welcome light part, count output), Irl is infrared finet status.
Ifr is infrared finet status.
Menu display, function
Group A rop open right (reverse opening), Clo is closes,
LeP opens left (positive opening), SE0 is to set the zero point, RST is to reset
Remarks: P0p parameter must be 1 master 1 slave, otherwise the communication is abnormal, P0p parameter must be 1 master 1 slave, otherwise the communication is abnormal, Setting P01 parameter setting: p-setting group (password: 1888)
Note: Except for F00 and R01, which need to be set separately, when other parameters are set for the master, the slave will also be synchronized.
Function code, function code name, minimum value, maximum value, unit, remarks
F00 Master-slave selection 0/1 0:master, 1:slave
F01 Motor rotation direction selection 0/1 0:CCW (reverse rotation), 1:CW (forward rotation)
F02 Acrylic length:300mm, 1-tempered glass 300mm, 2-acrylic 400mm, 3-tempered glass 400mm, 4-acrylic 500mm, 5-tempered glass 500mm, 6-acrylic 600mm, 7-tempered glass 600mm
F03 Open/close speed (%) 1-100%, percentage of motor rated speed (data conversion)
F04 acceleration 1-200 RPM / ms, deceleration = acceleration / 2;
F05 Running blocking current (A, lb, 0-900, adjustment unit 0.1A, 0 means no blocking judgment)
F06 Change blocking current 0-100 Adjustment unit 0.1A
F07 Speed ratio
F08 Emergency stop mode 0-1, 0 means unblocked clutch, 1 means locked clutch
F09 Strong push angle 1-900, adjustment unit 0.1 ° ;
F10 Allowable deviation in place = strong push angle -1 ;
F11 Change speed 1-80% of motor rated speed
F12 blocking mode selection 0-2, 0 means recovering to the previous state, 1 means recovering at an angle, 2 means speed, torque decreases
F13 Emergency stop mode 0-1, 0 means unblocked clutch, 1 means locked clutch
F16 Gate mode 0-10
0: Aging mode 1: Two-way swipe card 2: Two-way freedom 3: Two-way prohibition
4: Entry swipe card + exit free; 5: Entry swipe card+ exit prohibition
6: Entry free + exit swipe 7: Entry free + exit prohibition
F17 Left prohibition 0-1, 0 means no left prohibition, 1 means left prohibition
F18 Infrared type 0-3, 0 means infrared, 1 means infrared, 2 means infrared
F18 memory card enable 0/1, 0 means disable, 1 means enable
F19 Normally open normally closed state 0/1, 0 means normally closed, 1 means normally open
F20 Maximum unannounced passage time 10-999, adjustment unit is
F21 Allow card swipe in the channel 0/1, 0 means not allowed, 1 means allowed
F22 Weather closed backward 0/1, 0 means not closed, 1 means closed
F23 Voice volume 0-15
F24 Motor delay time 0-999, adjustment unit 10ms
F25 Whether to use the clutch when closed 0/1, 0: not used 1: used
F26 Is the clutch locked 0-1 if 111egally intruded, 0: not locked 1: locked
F27 Set infrared filter time 0-500, adjustment unit 10ms
F28 Allow delay after card swiping 0-500, adjustment unit 10ms
F29 Fire alarm door opening direction 0/1, 0: exit door opening; 1: entry door opening
F30 Opening delay time is 0-500, the adjustment unit is 10ms
F31 Stop time in channel 0-999, adjustment unit is 10ms
F32 Stop time in channel 0-999, adjustment unit is 1s
F33 Controller type 0-3, 0-swing gate double arm, 1-swing gate single arm, 2-wing gate double arm, 3-wing gate single arm
F34 Trigger anti-punch delay setting 0-999 ms
F35 Exit anti-punch delay setting 0-999 ms
F36 Whether to use the buzzer 0-1, 0 means no buzzer, 1 means buzzer
F37 Infrared type 0-1, 0 means 2 pairs, 1 means 6 pairs
F38 Opening door with or without buzzer prompt tone 0/1, 0: none (off) 1: yes (on)
F39 Chinese and English voice 0/1, 0 means Chinese, 1 means English
F46 RBZ Light output enable 0/1 0: pass light / welcome light logic, 1: RBZ Light Logic
F47 Band rate setting (RS232) 0- 5 4800, 9600, 19200, 38400, 57600, 115200
Voice content table

By setting F39 (Chinese and English voice) parameters,

you can switch between Chinese and English voice.

- 0 Welcome
- 1 Do not enter, authorized personnel only
- 3 Don't follow
- 5 Passing from opposite direction
- 7 Initialization failure
- 9 Master communication error
- 10 Slave communication error
- 11 Slave communication error
- 12 Master controller
- 13 Slave controller
- 14 Welcome home
- 15 Welcome home
- 16 Thank you for your patronage
- 17 You are under surveillance
- 18 Construction area! Hard hats must be worn
- 19 Only one passenger allowed at one time
- 20 Authorized personnel only
- 21 Closed off
- 22 Please authorize outside the line