



INSPECTION X-RAY SCANNERS 2020

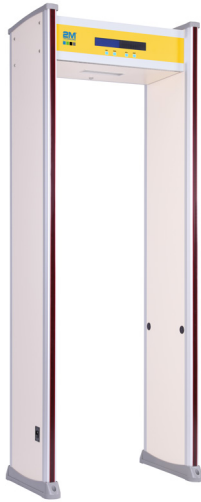


AN AMERICAN COMPANY
USA
TEXAS, USA

REV09152020

CONTENTS

Metal Detectors.....	3
Hand Held Metal Detectors	4
Baggage X-Ray Scanners.....	5
Pallet X-Ray Scanners	6
Under Vehicle Surveillance	7
Under Vehicle X-Ray	8



2MWT-i18Z

Indoor Rated, 18 Zone Walkthrough Metal Detector with LED Bars

FEATURES	TECHNICAL FEATURES
<ul style="list-style-type: none"> - Indoor 18 zones - LCD panel - 4 LED bars - 18 zones to identify multiple targets - Shock proof to avoid false alarms - Intelligent traffic and alarm counters - ADA Compliant Models Available - WIFI Network Capability option available 	<p>Outer frame: 87.4" x 32.3" x 20.6" Inner frame: 78.7" x 27.6" x 20.6" (HxWxD) (inches)</p> <p>Gross Weight: 209.4 lbs</p>



2MWT-O18Z

Outdoor Rated, 18 Zone Walkthrough Metal Detector with Intelligent DSP

FEATURES	TECHNICAL FEATURES
<ul style="list-style-type: none"> - Outdoor 18 zones - LCD panel - 4 LED bars - IP55 weatherproof design - 18 zones to precisely identify multiple target - ADA Compliant Models Available - WIFI Network Capability option available 	<p>Outer frame: 87.4" x 32.3" x 20.6" Inner frame: 78.7" x 27.6" x 20.6" (HxWxD) (inches)</p> <p>Gross Weight: 209.4 lbs</p>



2MWT-i24Z

Indoor Rated, 24 Zone Walkthrough with Intelligent DSP

FEATURES	TECHNICAL FEATURES
<ul style="list-style-type: none"> - Indoor 24 zones - Self diagnostic capability - MBSU backup battery capability - Easy maintenance - Auto scans area for environmental interference - 2 LED Bars - Detection Zones can be adjusted from 1 zone to 8, 16 or 24 zones. - ADA Compliant Models Available - WIFI Network Capability option available 	<p>Outer frame: 87.4" x 32.3" x 20.6" Inner frame: 78.7" x 27.6" x 20.6" (HxWxD) (inches)</p> <p>Gross Weight: 209.4 lbs</p>



2MWT-O45Z

Outdoor Rated, 45 Zone Walkthrough Metal Detector with LED Bars

FEATURES	TECHNICAL FEATURES
<ul style="list-style-type: none"> - Outdoor 45 zones - LCD panel - 2 LED bars - ADA Compliant Models Available - WIFI Network Capability option available 	<p>Outer frame: 87.4" x 32.3" x 20.6" (in.) Inner frame: 78.7" x 27.6" x 20.6" (in.) (HxWxD) (inches)</p> <p>Gross Weight: 209.4 lbs</p>



Portable Design

2MPWT-O24Z

Outdoor Rated, 24 Zone Portable Walkthrough Metal Detector

FEATURES	TECHNICAL FEATURES
<ul style="list-style-type: none"> - Outdoor 24 zones - Portable; easy to move only 1 person required without disassembly - Waterproof construction - Remote access - Easy to assemble and disassemble - Visual and audible alarm - ADA Compliant Models Available - WIFI Network Capability option available 	<p>Outer frame: 88.6" x 33.5" x 19.7" (HxWxD) (inches)</p> <p>Gross Weight: 99.2 lbs</p>



2MHMD

Hand Held Metal Detector Body Scanner

FEATURES	TECHNICAL FEATURES
<ul style="list-style-type: none"> - Wide Detect Zone - Practical and convenient to use - Stable performance - Light, sound/light and vibration, two alarm options - Built-in rechargeable Battery Operated 	<p>Dimensions: 16.1" x 13.1" x 1.65" (LxWxH) (inches)</p> <p>Gross Weight: 0.88 lbs</p>

BAGGAGE X-RAY SCANNERS

2M Technology offers various solutions for a broad range of applications. Our X-ray scanners are equipped with the latest technology to keep both your staff and the public safe. Common features include:

- Multilingual operation
- Automatic built in test and self diagnosis
- Secure access key
- Threat alert and material classification
- Auto archiving
- Energy saving design
- One key turn off
- Drugs and explosives inspection
- Indication of the date and time
- Radiation safe
- High resolution, high penetration and excellent image quality
- Sens-Tech detection board and Hamamatsu detector
- Indication of the date and time
- Baggage counter
- Threat alert and material classification
- Energy saving design
- One key turn off with patent
- Drugs and explosives detection

2MX-5030

X-Ray Baggage Scanner



Tunnel Size (LxW)	503 x 295.5 mm 16.5' x 9.7' ft
Conveyor Height	663.5 mm / 26.1" in.
Steel Penetration	8mm / 0.31" in.
Voltage	80 kv
Weight Capacity	100 kg / 220.5 lbs

2MX-6040

X-Ray Baggage and Parcel Scanner



Tunnel Size (LxW)	606 x 405 mm 19.9' x 13.3' ft
Conveyor Height	668 mm / 26.3" in.
Steel Penetration	38mm / 1.5" in.
Voltage	160 kv
Weight Capacity	150 kg / 330.7 lbs

2MX-6550

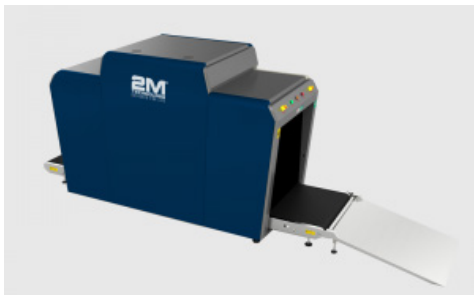
X-Ray Baggage Scanner



Tunnel Size (LxW)	658 x 500 mm 21.6' x 1.6' ft
Conveyor Height	699.9 mm / 27.6" in.
Steel Penetration	30mm / 1.2" in.
Voltage	140 kv
Weight Capacity	150 kg / 330.7 lbs

2MX-8065

X-Ray Baggage Scanner



Tunnel Size (LxW)	800 x 650 mm 26.2' x 21.3' ft
Conveyor Height	341 mm / 13.4" in.
Steel Penetration	34mm / 1.3" in.
Voltage	160 kv
Weight Capacity	200 kg / 440.9 lbs

2MX-10080H

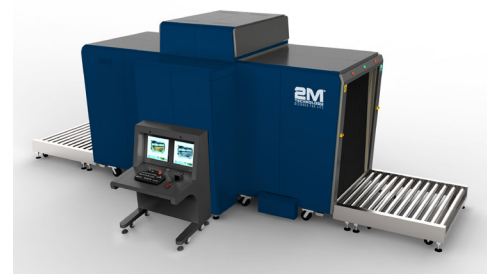
Large Luggage Boxes X-Ray Scanner



Tunnel Size (LxW)	1000 x 800 mm 32.8' x 26.5' ft
Conveyor Height	341mm / 13.4" in.
Steel Penetration	34 mm / 1.3" in.
Voltage	160kv
Weight Capacity	200 kg / 440.9 lbs

2MX-150180

Heavy Duty Pallet and Cargo Inspection



Tunnel Size (LxW)	1505 x 1800 mm 49.4' x 59.1' ft
Conveyor Height	350 mm / 13.8 in.
Steel Penetration	34 mm / 1.3" in.
Voltage	160 kv
Weight Capacity	2000 kg / 4409.2 lbs

PALLET X-RAY SCANNERS



2MXP-2300

Portable X-Ray Scanner

- Portable x-ray scanner
- Effective scanning area 420 x 300mm
- X-ray source weight 14kg
- Wired transmission
- X-ray tube voltage 120KV
- Advanced digital display system
- Dynamically captures images
- High resolution and fast imaging speed
- Automatically saves scanned images
- Helps detect explosives and narcotics
- High capacity battery
- Multi-effect image processing
- Provides X-ray delay and safety protection to ensure operator safety
- Modular design, easy to maintain

Pricing

MODEL	DESCRIPTION	TUNNEL SIZE	CONVEYOR SPEED	CONVEYOR HEIGHT	CONVEYOR MAX LOAD	WIRE RESOLUTION	STEEL PENETRATION	X-RAY GENERATOR
X-RAY	X-Ray Baggage Scanner	502.9 x 297.2 mm 19.8" x 11.7" (in.)	0.22m/s	663 mm / 26.1" in.	100kg / 220.5 lbs	40 AWG	1.3" in.	140kv
2MX-5030H							1.5" in.	160kv
2MX-6040	X-ray Baggage and Parcel Scanner	607.1 x 403.9 mm 23.9" x 15.9" (in.)	0.22m/s	668 mm / 26.3" in.	150 kg / 330.7 lbs	40 AWG	1.3" in.	140kv
2MX-6040H							1.5" in.	160kv
2MX-6550	X-ray Baggage Scanner	658 x 490.3 mm 25.9" x 19.3" (in.)	0.22m/s	700 mm / 27.6" in.	150 kg / 352.7 lbs	40 AWG	1.3" in.	140kv
2MX-6550H							1.5" in.	160kv
2MX-8065	X-ray Baggage Scanner	800.1 x 650.2 mm 31.5" x 25.6" (in.)	0.22m/s	341 mm / 13.4" in..	199.9 kgs / 440.9 lbs	38AWG	1.3" in.	160kv
2MX-10080H	Heavy Duty Pallet and Cargo Inspection	1005.8 x 807.7 mm 39.6" x 31.8" (in.)	0.22m/s	13.3" in	199.9 kgs / 440.9 lbs	36AWG	1.3" in.	160kv
2MX-150180	Heavy Duty Pallet and Cargo Inspection Scanner	1506.2 x 1800.9 mm 59.3" x 70.9" (in.)	0.22m/s	350 mm / 13.8 in.	1999.9 kgs / 4409.2 lbs	36AWG	1.3" in.	160kv
2MXP-2300	Portable X-ray Baggage Scanner	304.8 x 297.2 mm 12" x 9.9" (in.)	N/A	N/A	N/A	40AWG	Aluminum 60mm Copper Steel 6mm Copper	120kv



**Operations Control System
VMS with Display Monitor**



**Side rubber bumps to
slow down vehicles**



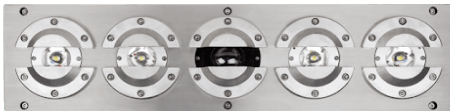
2MPUVS-C

Color Portable Under Vehicle Surveillance System

FEATURES	TECHNICAL FEATURES
<ul style="list-style-type: none"> - Automatic digital line scan camera, w/ high resolution & image clarity - Scans a complete image of the vehicle undercarriage - Captures objects as small as 0.08" / 2 mm in diameter - Multiple scene image monitoring recording function - Multi-language user interface - ALPR (Automatic License Recognition) (Optional) - Multiple devices networked control functions (Optional). 	<p>Dimensions (HxWxD): 450 x 400 x 88 (mm) 17.7" x 15.7" x 3.5" (in.)</p> <p>Scanning Device Weight: 24 kg / 2.2 lbs</p>

2MUVS-C

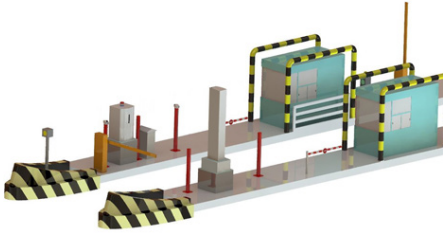
In-ground Color Embedded Under Vehicle Surveillance System



FEATURES	TECHNICAL FEATURES
<ul style="list-style-type: none"> - Multi entrance management. Statistics of entering and exiting vehicles - Auto digital line scan, high resolution undercarriage imaging - High automation, easy to use - One pass scans entire vehicle without stopping, adapted to different speeds - Images can be stored, retrieved and searched or compared with other images. - Variety of image processing: enlarge, stitching, and cutting - ALPR- Automatic License Plate Recognition software (optional) - RFID technology - Driver face capture camera - Screen video display - Suitable for all vehicles, wide vision 	<p>Dimensions (HxWxD): 450 x 400 x 88 (mm) 17.7" x 14.7" x 3.5" (in.)</p> <p>Gross Weight: 24 kg / 52.9 lbs</p>

OPTIONAL FITS FOR UNDER VEHICLE SURVEILLANCE SYSTEM (UVSS)

(ANPR) Automatic Number Plate Recognition Software	80% accuracy
Camera	Additional Cameras (for scene / entrance / exit / driver face) Fits model 2MT-3300
Digital Video Recorder system can support 4 lanes ANPR software	DVRs to accommodate additional cameras Fits model 2MT-3300



2MX-240DT-160KVL

Drive-through Vehicle Inspection System

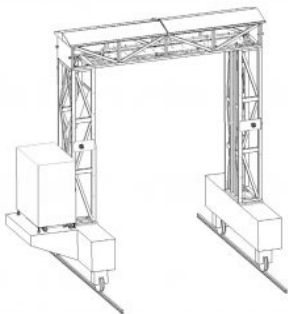
DESCRIPTION	INSPECTION SPEED	PRODUCTION LEAD TIME	LABOR	INSTALLATION & SUPPORT
	Vehicles/hr	Days		People x Days
<ul style="list-style-type: none"> - 160KV - Scans car vehicle trunks - Side view, L-shape detectors - Continuous scanning - Avoids scanning the driver for safety - All information is stored in the system - The x-ray images clearly show a detailed image of the compartment - Identifies the information of the scanned vehicle, including the license plate number, color, etc 	100	60	Light work	2 ppl x 7 days



2MX-240DT-160KVL

Drive-through Vehicle Inspection System

DESCRIPTION	INSP. SPEED	PRODUCTION LEAD TIME	LABOR	INSTALLATION & SUPPORT
	Vehicles/hr	Days		People x Days
<ul style="list-style-type: none"> - 320kv - Can move the vehicles automatically through the x-ray scanning unit without a driver - U-shaped detectors provide high penetration, optimized viewing angle & high definition images - Dual-energy imaging - Automatic License Plate Recognition (ALPR) can be integrated 	30	100	Heavy work	6 x 30



2MX-240DT-160KVL

Drive Through Vehicle Inspection System

- Easy to use software managing vehicle scans with a completion check list
- System capable of data inquiry searches, user management, real time video monitoring, easy quick playback and more
- Scans up to 30 vehicles an hour
- Safe system with targeted X-ray radiation

MODEL	DESCRIPTION	INSPECTION SPEED	PRODUCTION LEAD TIME	LABOR	INSTALLATION & SUPPORT
		Vehicles/hr	Days		People x Days
2MX-291300-200KVL	200KV, rail Side view, L-shape detectors	30	90	Heavy work	4x25
2MX-291300-300KVL	300KV, rail Side view, L-shape detectors	30	90	Heavy work	4x25
2MX-291300-300SKVL	300KV, conveyor	60	100	Heavy work	4x25



802 Greenview Dr. Suite 200,
Grand Prairie TX. 75050 USA
Toll Free 1-866-708-5401
Fax (+1) 972-999-4113
Sales@2MTechnology.net
or visit us at www.2mtechnology.net