



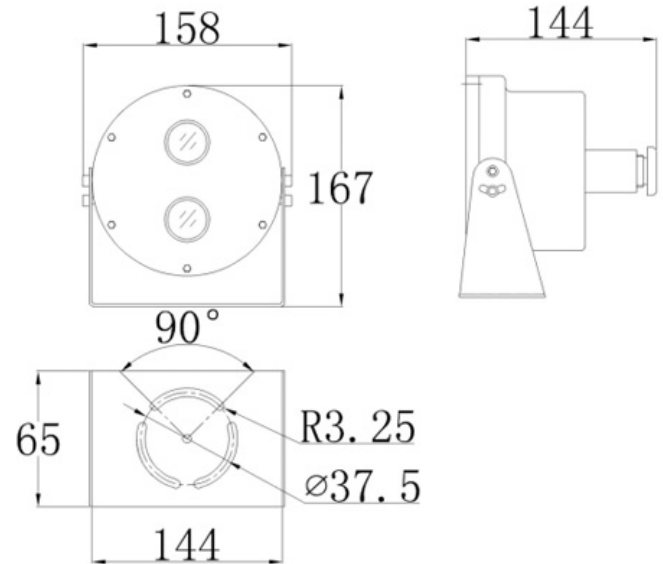
## Features

- 316L Stainless steel (also available in 304 SS)
- 4MP Resolution
- Protection enclosure: IP68
- Day/night functionality
- Smart IR , up to 30 m (98 ft) IR distance
- Optical glass window with higher light transmittance
- IR anti-reflection window to increase the infrared transmittance
- 3D DNR (Digital Noise Reduction)
- H.265, H.264, MJPEG
- Embedded smart algorithm
- Triple streams
- ONVIF Conformance

CERTIFICATE	
Certificate Mark	ExdII C T6 Gb/ Ex tD A21 IP68 T80°C
MECHANICAL	
Housing	Stainless steel 316L (also available in 304)
IP	IP68
Cable Thread Hole	1pcs G3/4 or NPT3/4
ELECTRICAL	
Voltage	DC24V or POE power supply
Power	8W
AMBIENT	
Ambient Temperature	-25°C to 60°C [-13°F to 140°C]
Air Pressure	80Kpa to 106Kpa
Relative Humidity	≤ 95% (no condensation)
LIGHTS	
Light distance	20-30m
CAMERA	
Max. Resolution	2592×1520
Video Compression	H.265/H.264/MJPEG
Frame Rate	4MP (2592×1520): Max. 20 fps; 4MP (2560×1440): Max. 25 fps 3MP (2048×1520): Max. 30 fps; 1080P (1920×1080): Max. 30 fps
Video Streaming	Triple
9:16 Corridor Mode	Supported
ROI	Supported
OSD	Up to 8 OSDs
Motion Detection	Up to 2 areas
Privacy Mask	Up to 4 areas
SMART	
Behavior Detection	Intrusion, crossing line, motion detection
Intelligent Identification	Face detection
Statistical Analysis	People counting
NETWORK	
Protocol	L2TP, IPv4, IGMP, ICMP, ARP, TCP, UDP, DHCP, PPPoE, RTP, RTSP, RTCP, DNS, DDNS, NTP, FTP, UPnP, HTTP, HTTPS, SMTP, SIP, 802.1x
Compatible Integration	ONVIF, API
INTERFACE	
Network	1 RJ45 10M/100M Base-TX Ethernet

GENERAL	
Power	12 V DC, or PoE (IEEE802.3 af)
Power Consumption	Max 6.4 W
Cable	Integrated
Size	158 x 144 x 167 mm / 6.2" x 5.7" x 6.6" in.
Weight	4 kg / 2.2 lbs

## Features



## ATEX Markings Breakdown

