



## Overview

- Hydraulic bollards with built-in pump
- SGS certified IP68 waterproof and dustproof
- SGS certified nominal operating temperature -40°C ~ 70°C, dry heat test, low temperature resistance test
- SGS certified rising and descent speed;
- SGS certified durability test of continuous operating with 5000 loops;
- PLC controller linkage work with vehicle identification, inductive loops, CCTV, beam barrier, etc.

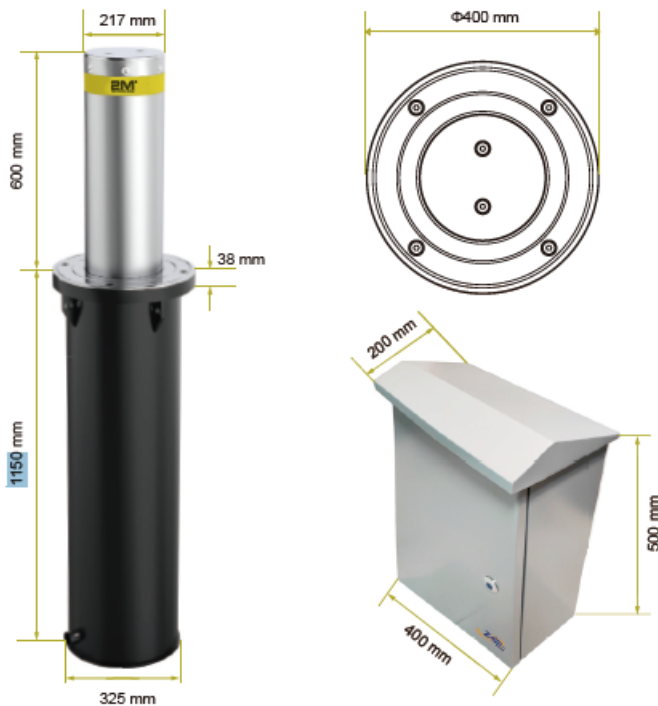
## Specifications

<b>Dimensions (Diameter x H)</b>	Ø 400 x 1150 (mm)
<b>Cylinder Material</b>	304 Stainless Steel
<b>Cylinder Diameter</b>	217 mm /
<b>Cylinder Intercept Height</b>	600 mm
<b>Rising Cylinder Total Height</b>	760 mm
<b>Cylinder Thickness</b>	6 mm
<b>Flange Diameter</b>	400 mm
<b>Flange Thickness</b>	38 mm
<b>Cylinder Underground Depth</b>	1150 mm
<b>Cylinder underground Diameter</b>	325 mm
<b>Movement Principle</b>	Hydraulic driving
<b>Cylinder Stainless Steel Finish</b>	Brushed
<b>Reflecting Adhesive Strip</b>	Yes
<b>Emergency Lowering if Power Fails</b>	Yes
<b>Safety Reversal Pressure Switch</b>	Optional
<b>LED light</b>	Yes
<b>Type of Use</b>	Intensive
<b>Life Units</b>	Life Units
<b>IP Rating</b>	IP68
<b>Rising Time</b>	3.8s
<b>Lifting Force</b>	200KG
<b>Operating Temperature</b>	-40°C ~ +70°C
<b>Heating Unit</b>	Optional
<b>Overheating Protection</b>	+120°C
<b>Oil Tank Capacity</b>	1L
<b>Power Supply</b>	AC380V / AC220V
<b>Power Consumption</b>	300W
<b>Control Cabinet Dimension</b>	400mmL x 200mmW x 500mmH
<b>Finish</b>	Powder Coated/ Outdoor Rated
<b>Self-Testing Program</b>	Yes
<b>Emergency Lowering</b>	Yes
<b>Remote Control Distance</b>	100 meters
<b>Communication Signal</b>	RS-232, RS-485, Ethernet Optional
<b>Air Leakage Switch</b>	Yes
<b>Power Supply</b>	AC380V / AC220V
<b>Control Voltage</b>	DC12V, Mean Well brand
<b>PLC Controller Linkage</b>	Traffic light, Inductive Detector Loop, and other access control equipment

Available Models

MODEL	CYLINDER	RISING TIME	FLANGE DIAM.	FLANGE THICKNESS	IMPACT TEST	DIMENSIONS (LxWxH) mm/ft
<b>2MHB-606</b>	6mm	3.8 s	400mm	38mm	—	400 x 1150 (mm) / 1.3 x 3.8 (ft) <b>Intercept Height:</b> 600mm/ 23.6" in
<b>2MHB-6010</b>	10mm	3.8 s	400mm	38mm	1500KGS/100KMH, P1	400 x 1150 (mm) / 1.3 x 3.8 (ft) <b>Intercept Height:</b> 600mm / 23.6" in
<b>2MHB-601058</b>	10mm	3.8 s	470mm	58mm	—	470 x 1200 (mm) / 1.5 x 3.9 (ft) <b>Intercept Height:</b> 600mm/2.2" in
<b>2MHB-60</b>	10mm	1.8 s	440mm	58mm	—	440 x 1150 (mm) / 1.4 x 3.8 (ft) <b>Intercept Height:</b> 600mm/ 2.2" in
<b>2MHB-100</b>	30mm	4-6s	500x815 (mm)	100mm	6800KGS/80KMH	500 x 1500 (mm) / 1.6 x 3.8 (ft) <b>Intercept Height:</b> 1000mm/ 39.3" in

Dimensions



Hydraulic Actuator



- Low temperature sensitivity
- No fear of any harsh environment

PLC Control Box

- Waterproof design
- Widely integration usage
- Programmable Logic Controller

