

Features

- 90mm /3.5" in HD camera head
- Pan and tilt zoom head, with 10x optical zoom
- 4-wheel crawler body for 200mm to 1000mm
- Motorized elevator
- 12.1" inch display controller (256GB hard disk)
- Remote control box
- 120m /4.7" in. cable reel with counter
- Includes keyboard and mouse
- 110/220V power supply
- 48V battery optional
- Cable guide for manhole and underground
- Hook to lower down the crawler
- Tools and screws
- Can generate reports
- Motorized cable reel sold separately

OTHER SIZES AVAILABLE

2MRCPTZ-20100-394	393.70ft/ 120m manual reel
2MRCPTZ-20100-492	492.13ft/150m manual reel
2MRCPTZ-20100-656	656.17ft/ 200m manual reel

OPTIONAL

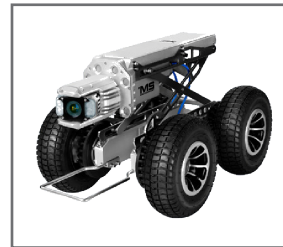
Motorized reel

Specifications

Product Classification	Sewer pan and tilt camera
Inspection Range	Approx. DN 200 and up
Dimension	Ø 190mm/7.4" in.
Weight	Approx. 17 kg/37 lbs
Tractor Operation	Yes
Camera Reorient	Yes
Focus	Auto focus
Lighting	4 LED lights
Ingress Protection	IP68
Ambient Temperature	-20°C to 55°C / -4°F to 131°F
Test Pressure	10-15 PSI
Pressure Monitoring	Integrated pressure sensor continuously monitors inner pressure
Panning Range	270° endless pan
Viewing Range	± 120°
Angle of Rotation	Continuous
Sensor (Inch)	1/4"
Sonde	No
TV Standard	HD
Explosion Protection	Optional
Image Resolution	700TVL

Items Included

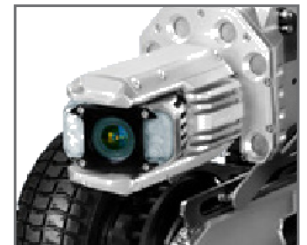
CRAWLER



- For 8" to 59" lateral sewer mainlines.
- Steerable to traverse bend pipes and navigate over obstacles.
- Manual controlled camera-lift to ensure the camera head stays centered with the pipe.
- Two tire sizes inside the package.
- 4-wheel drive can travel forward, reverse and turn around.

CAMERA HEAD

- Camera sensor: 1/4" 700TVL Sony CCD
- Sensitivity: 0.01 LUX for low light areas
- Zoom: 120X (10X optical, 12X digital)
- Illumination: 4x 10W LED lights
- Rotation: 360° pan, 270° tilt
- Auto leveling; Auto focus
- Working temperature: -20°C~55°C/-4°F~131°F
- Diameter: 90mm/3.5" in.
- Weight: 2.2kg/4.8lbs
- Waterproof level: IP68



LCD MONITOR



- 12.1" sunlight viewable touch control LCD
- Record inspections up to 64GB on SSD
- IP53 waterproof rating
- Includes software to regulate crawler motion, cable reel winding and consistently measures pressure, slope, distance, etc.
- Size (LxWxH): 426 x 266 x 52 (mm) / 16.7" x 10.5" x 2.04" (in.)

CABLE REEL

- Optional manual or auto cable winding up component
- Material: Aviation aluminum+PC plastic
- Meter-counter: Distance constantly displayed on screen
- Waterproof: IP53
- Reinforced semi-rigid cable
- Load capacity: 150kg/330.6lbs
OD: 9mm/0.35" in.
- 120m/393.7' ft. standard cable length

