



Features:

- Multilingual operation
- Automatic built-in test and self-diagnostics
- Secure access key
- Uninterrupted power supply (UPS)
- Threat alert and material classification
- Auto archiving
- Network-Ready
- Energy saving design
- One key turn off
- Time and date stamp
- Drugs and explosives inspection
- Baggage counter
- Sens-Tech detection board and Hamamatsu detector

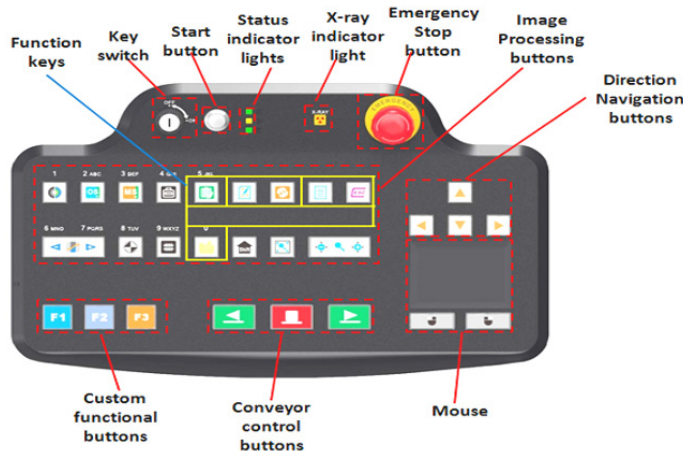
Specifications

PHYSICAL SPECIFICATIONS	
Tunnel Size (WxH)	1000 x 1000 (mm) / 39.4" x 39.4" (in.)
Unit Weight	950kgs/2094.4 lbs
Unit Size (LxWxH)	3629 x 1295 x 1916 (mm)/ 142.9" x 51" x 75.5" (in.)
Gross Weight	1100kgs/2204.6 lbs
Packing Size	#1: 285 x 142 x 212 (cm)/112" x 55.9" x 83.5" (in.) #2: 122 x 90 x 141 (cm) / 48" x 35.4" x 55.5" (in.)
GENERAL SPECIFICATIONS	
Conveyor Speed	0.22 m/s (0.72 ft/s)
Conveyor Height	341 (mm)/13.4" (in.)
Conveyor Capacity	200kgs / 440.9 lbs
X-Ray Dose/Inspection	≤4μSv
X-Ray Leakage	≤1μSv/h at any point 5 centimeters outside the external surface
Penetration	34mm steel
Wire Resolution	Dia. 0.127mm copper wire (AWG36)
Penetration Resolution	Dia. 0.202mm copper wire (AWG32) under three-step aluminum wedge 9.5mm, 15.9mm, 22.2mm
Spatial Resolution	Horizontal: dia. 1.3mm, Vertical: dia. 1.3mm
Power Consumption	Max. 1KW
Noise	<60dB
Film Safety	Guarantee ASA/ISO1600 Film
X-RAY GENERATOR (TWO)	
Anode Voltage	140-160 KV adjustable
Ray Direction	Downward
Cooling / Duty Cycle	Oil Cooling /100%
IMAGE SYSTEM	
X-ray Sensor	L-Shaped Photodiode Array, 12bit deep
Images Processing	24bit real time processing ,4colors analysis, Images displayed marked date and ID No., Count the number of bags
Image Display	High resolution of 1024 x 1280 pixel; Image Grey Level: 4096
Image Enhancement	1-64times enlargement continuity, Color/BW, negative, high/low penetration enhancement, brightening, darkening, gray level scan, super enhancement, elimination of organic/inorganic materials, local enhancement, pseudo color processing, edge enhancement, etc.
Image Recall	30 images recallable
Explosives & Narcotics Detection	Suspicious organics highlight(atomic number Zeff=7,8,9)
Alarm	Alarm and box line the suspicious objects including hard to penetrate material, explosives and drugs
Threat Image Projection (TIP)	Inserting fictional, but realistic images of threat items into baggage during screening operation, for maintenance of vigilance, as well as training and assessment of image identification capability

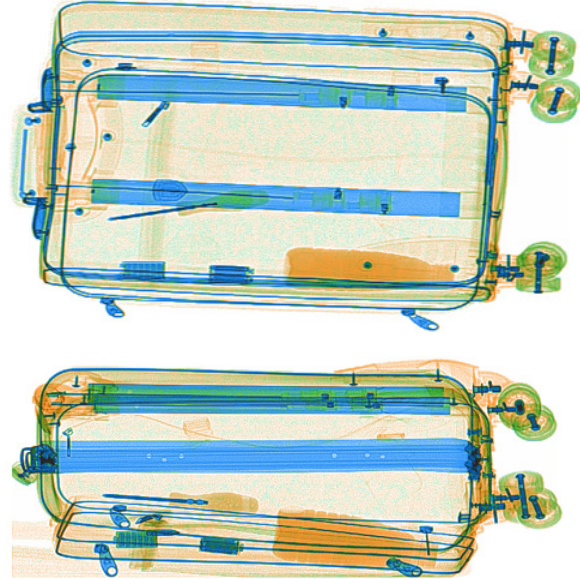
Image Archive	Up to 50,000 images stored automatically, enable transferring to USB disk, and converting to JPG, BMP and other general formats
Miscellaneous Functions	Time/date display, counters, user management, system-on/X-ray-on timers, power on self test, built-in diagnostic facilities, dual-direction scanning, system log, system standby and stimulant training, etc.
Network Applications	Option: Multiple remote applications available based on Ethernet LAN and windows platform, such as image centralized storage and identify, recheck workstation, etc.
OPERATING ENVIRONMENT	
Operation Temperature/Humidity	5°C-40°C (14°F to 104°F)/ 0%-90%(non-condensing)
Storage Temperature/Humidity	-20°C-60°C (-4°F to 104°F)/ 10%-90%(non-condensing)
Operation Power	220VAC(±10%) 50±3Hz (Optional: 100VAC, 110VAC, 120VAC, 200VAC)
Stabilizer and UPS	Stabilizer optional. UPS options: 15mins, 30mins, 60mins etc.
COMPUTER AND OTHER	
Monitor	High Resolution Color, LCD Accord, 17inch
RAM	4GB
Hard Disk	2TB
Keyboard	Special designed
System	Windows 10
Electric roller	Three-phase
COMPLIANCE	
Certificates	ISO19001; ISO14001; OHSMS18001; CE RoHS; FDA FCC

*Product specifications and availability are subject to change without notice.

Keyboard



Imaging



Dimensions

