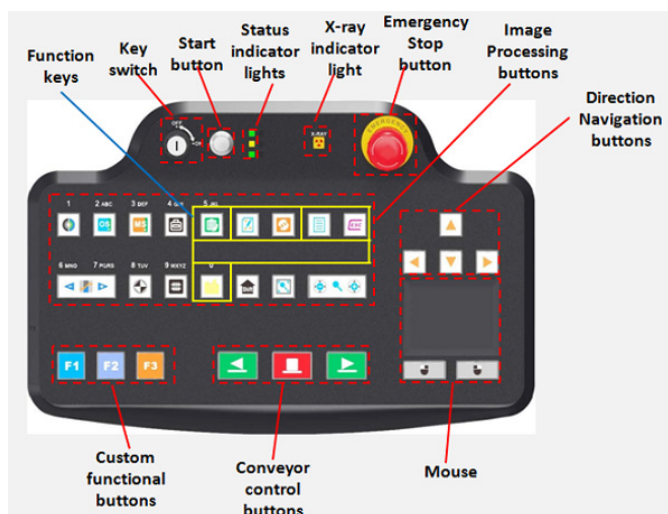


Features

- Dual monitors
- Secure access key
- Multilingual operation
- Automatic built in test and self-diagnostics
- Uninterruptible power supply (UPS) for computer
- Threat alert and material classification
- Energy saving design
- One key turn off
- Drugs and explosives detection
- Baggage counter
- Time and date stamp
- Sens-Tech detection board and Hamamatsu detector

Keyboard

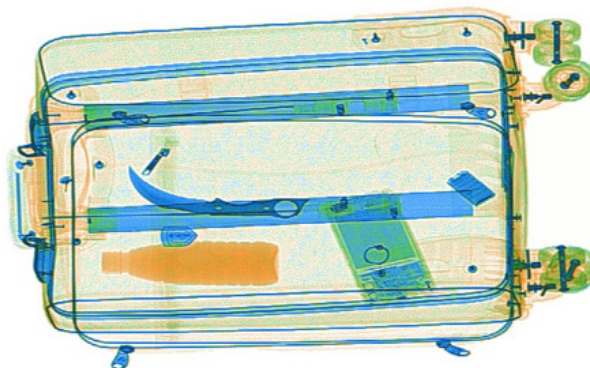


Specifications

PHYSICAL SPECIFICATIONS	
Tunnel Size (LxH)	1000 x 800 (mm) / 39.4" x 31.5" (in.)
Unit Weight	800 kg/ 1763.7 lbs
Unit Size (LxWxH)	3130 x 1295 x 1716 (mm)/ 123.2" x 51" x 67.6" (in.)
Gross Weight	1000kg/2204.6 lbs (Packet on wooden pallet)
Packing Size	#1: 242 x 143 x 198 (cm) / 95.3" x 56.3" x 77.9" (in.) #2: 122 x 90 x 141 (cm) / 48" x 35.4" x 55.5" (in.)
GENERAL SPECIFICATIONS	
Conveyor Speed	0.22 m/s (0.72 ft/s)
Conveyor Height	341 (mm)/ 13.4" (in.)
Conveyor Capacity	200 kg/440.9 lbs
X-ray Dose/Inspection	≤4μSv
X-ray Leakage	≤1μSv/h at any point 5 centimeters outside the external surface
Penetration	34mm /1.33" in. steel
Wire Resolution	Dia. 0.102mm copper wire (AWG38)
Penetration Resolution	Dia. 0.202mm copper wire (AWG32) under three-step aluminum wedge 9.5mm, 15.9mm, 22.2mm
Spatial resolution	Horizontal: dia. 1.3mm, Vertical: dia. 1.3mm
Power Consumption	Max. 1KW
Power Current	Max. 5mA
Noise	<60 dB
Film Safety	Guarantee ASA/ISO1600 Film
X-RAY GENERATOR (SINGLE)	
Anode Voltage	140-160 KV Adjustable
Ray Direction	Downward
Cooling / Duty Cycle	Oil Cooling /100%
IMAGE SYSTEM	
X-ray Sensor	L-Shaped Photodiode Array, 12bit deep
Image Display	High resolution of 1024 x 1280 pixel; Image Grey Level: 4096
Images Process	24bit real time processing ,4colors analysis, Images displayed marked date and ID No., Count the number of bags
Image Enhancement	1-64times enlargement continuity, Color/BW, negative, high/low penetration enhancement, brightening, darkening, gray level scan, super enhancement, elimination of organic/inorganic materials, local enhancement, pseudo color processing, edge enhancement, etc.
Image Recall	30 images recallable
Explosives & Narcotics Detection	Suspicious organics highlight (atomic number Zeff=7,8,9)
Alarm	Alarm and box outlines the suspicious objects including hard to penetrate material, explosives and drugs
Threat Image Projection (TIP)	Insertion of fictional but realistic images of threatening items into baggage during screening operation for training purposes to assess image identification capabilities
Image Archive	Up to 50,000 images stored automatically, enable transferring to USB disk, and converting to JPG, BMP and other general formats
Miscellaneous Functions	Time/date display, counters, user management, system-on/ X-ray on timers, power on self test, built-in diagnostic facilities, dual-direction scanning, system log, system standby and simulation training etc.

Network Applications (Optional)	Multiple remote applications available based on Ethernet LAN and windows platform, such as image centralized storage and identify, recheck workstation, etc.
OPERATING ENVIRONMENT	
Operation temperature	5°C to 40°C (41°F to 104°F) / 0%-90%(non-condensing)
Storage Temperature	-40°C to 70°C (-4°F to 140°F) / 10%-90%(non-condensing)
Operation Power	220VAC(±10%) 50±3Hz (Optional: 100VAC, 110VAC, 120VAC, 200VAC)
Stabilizer and UPS	Stabilizer optional. UPS options: 15mins, 30mins, 60mins etc.
COMPUTER AND OTHER	
Monitor	2x 17" in. LCD monitors, 1280 x 1024, one console desk
RAM	4GB
Hard Disk	2TB
Keyboard	Special designed
System	Windows® 10
Electric roller	Three-phase
COMPLIANCE	
Certificates	ISO19001 ; ISO14001 ; OHSMS18001 ; CE RoHS FDA FCC

Imaging



Dimensions

