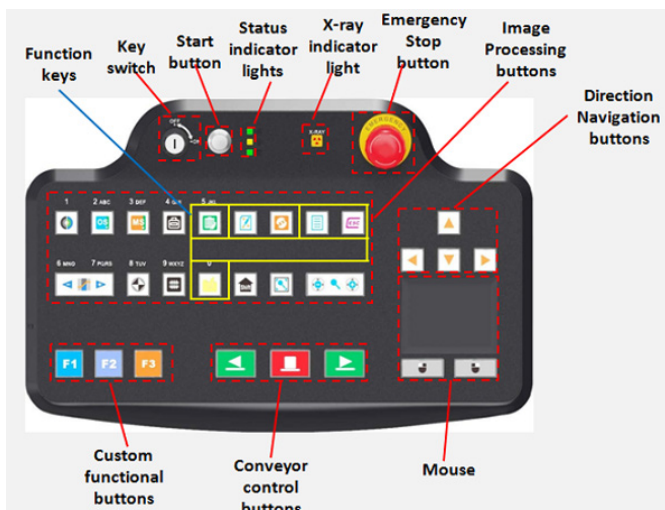


## Features

- Dual monitors
- Secure access key
- Multilingual operation
- Automatic built in test and self-diagnostics
- Uninterruptible power supply (UPS) for computer
- Threat alert and material classification
- Energy saving design
- One key turn off
- Drugs and explosives detection
- Baggage counter
- Time and date stamp
- Sens-Tech detection board and Hamamatsu detector

## Keyboard

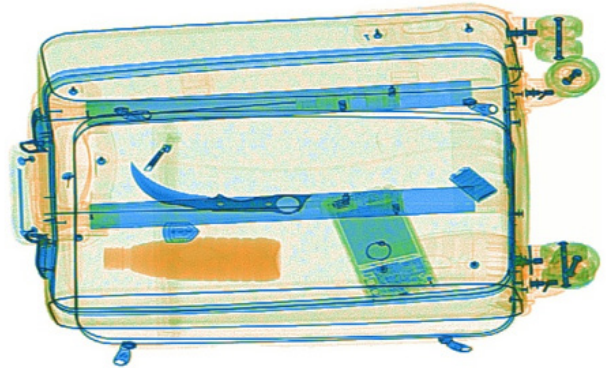


## Specifications

| PHYSICAL SPECIFICATIONS                     |  |
|---|--|
| <b>Tunnel Size (LxH)</b>                    | 1000 x 800 (mm) / 39.4" x 31.5" (in.)  |
| <b>Unit Weight</b>                          | 800 kg/ 1763.7 lbs   |
| <b>Unit Size (LxWxH)</b>                    | 3130 x 1295 x 1716 (mm) / 123.2" x 51" x 67.6" (in.)   |
| <b>Gross Weight</b>                         | 1000kg/2204.6 lbs (Packet on wooden pallet)  |
| <b>Packing Size</b>                         | #1: 242 x 143 x 198 (cm) / 95.3" x 56.3" x 77.9" (in.)<br>#2: 122 x 90 x 141 (cm) / 48" x 35.4" x 55.5" (in.)  |
| GENERAL SPECIFICATIONS                      |  |
| <b>Conveyor Speed</b>                       | 0.22 m/s (0.72 ft/s)   |
| <b>Conveyor Height</b>                      | 341 (mm)/ 13.4" (in.)  |
| <b>Conveyor Capacity</b>                    | 200 kg/440.9 lbs   |
| <b>X-ray Dose/Inspection</b>                | ≤4μSv  |
| <b>X-ray Leakage</b>                        | ≤1μSv/h at any point 5 centimeters outside the external surface  |
| <b>Penetration</b>                          | 34mm /1.33" in. steel  |
| <b>Wire Resolution</b>                      | Dia. 0.102mm copper wire (AWG38)   |
| <b>Penetration Resolution</b>               | Dia. 0.202mm copper wire (AWG32) under three-step aluminum wedge 9.5mm, 15.9mm, 22.2mm   |
| <b>Spatial resolution</b>                   | Horizontal: dia. 1.3mm, Vertical: dia. 1.3mm   |
| <b>Power Consumption</b>                    | Max. 1KW   |
| <b>Power Current</b>                        | Max. 5mA   |
| <b>Noise</b>                                | <60 dB   |
| <b>Film Safety</b>                          | Guarantee ASA/ISO1600 Film   |
| X-RAY GENERATOR (SINGLE)                    |  |
| <b>Anode Voltage</b>                        | 140-160 KV Adjustable  |
| <b>Ray Direction</b>                        | Downward   |
| <b>Cooling / Duty Cycle</b>                 | Oil Cooling /100%  |
| IMAGE SYSTEM                                |  |
| <b>X-ray Sensor</b>                         | L-Shaped Photodiode Array, 12bit deep  |
| <b>Image Display</b>                        | High resolution of 1024 x 1280 pixel; Image Grey Level: 4096   |
| <b>Images Process</b>                       | 24bit real time processing ,4colors analysis, Images displayed marked date and ID No., Count the number of bags  |
| <b>Image Enhancement</b>                    | 1-64times enlargement continuity, Color/BW, negative, high/low penetration enhancement, brightening, darkening, gray level scan, super enhancement, elimination of organic/inorganic materials, local enhancement, pseudo color processing, edge enhancement, etc. |
| <b>Image Recall</b>                         | 30 images recallable   |
| <b>Explosives &amp; Narcotics Detection</b> | Suspicious organics highlight (atomic number Zeff=7,8,9)   |
| <b>Alarm</b>                                | Alarm and box outlines the suspicious objects including hard to penetrate material, explosives and drugs   |
| <b>Threat Image Projection (TIP)</b>        | Insertion of fictional but realistic images of threatening items into baggage during screening operation for training purposes to assess image identification capabilities   |
| <b>Image Archive</b>                        | Up to 50,000 images stored automatically, enable transferring to USB disk, and converting to JPG, BMP and other general formats  |
| <b>Miscellaneous Functions</b>              | Time/date display, counters, user management, system-on/ X-ray on timers, power on self test, built-in diagnostic facilities, dual-direction scanning, system log, system standby and simulation training etc.   |

|  |  |
|--|--|
| <b>Network Applications (Optional)</b> | Multiple remote applications available based on Ethernet LAN and windows platform, such as image centralized storage and identify, recheck workstation, etc. |
| <b>OPERATING ENVIRONMENT</b>           |  |
| <b>Operation temperature</b>           | 5°C to 40°C (41°F to 104°F) / 0%-90%(non-condensing)   |
| <b>Storage Temperature</b>             | -40°C to 70°C (-4°F to 140°F) / 10%-90%(non-condensing)  |
| <b>Operation Power</b>                 | 220VAC(±10%) 50±3Hz<br>(Optional: 100VAC, 110VAC, 120VAC, 200VAC)  |
| <b>Stabilizer and UPS</b>              | Stabilizer optional. UPS options: 15mins, 30mins, 60mins etc.  |
| <b>COMPUTER AND OTHER</b>              |  |
| <b>Monitor</b>                         | 2x 17" in. LCD monitors, 1280 x 1024, one console desk   |
| <b>RAM</b>                             | 4GB  |
| <b>Hard Disk</b>                       | 2TB  |
| <b>Keyboard</b>                        | Special designed   |
| <b>System</b>                          | Windows® 10  |
| <b>Electric roller</b>                 | Three-phase  |
| <b>COMPLIANCE</b>                      |  |
| <b>Certificates</b>                    | ISO19001 ; ISO14001 ; OHSMS18001 ;<br>CE RoHS<br>FDA FCC   |

## Imaging



## Dimensions

