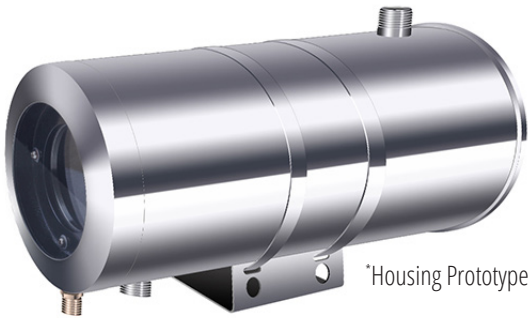


2MEXH-XX302020

Water Cooling Explosion Proof Housing



*Housing Prototype

MECHANICAL		
Housing	Available in Stainless steel 304 or 316L	
IP	IP66	
Cable Thread Hole	G3/4	
Air/water hole	G1/2	
ELECTRICAL		
Voltage	AC100V~AC240V or DC24V or AC24V	
Power	15W	
AMBIENT		
Cooling Options	2MEXH-AC302020	2MEXH-WC302020
Cooling Circulation	Compressed air,	Circulate running water
Temperate Resist	-25 to +150°C	0 to +250°C
Cooling Media	Air Flow: 0.3-0.6m ³ /min, Temperature ≤35°C pressure 0.1-0.2 MPa	Water Flow: 0.3m ³ /h, Temperature ≤35°C pressure ≥0.1MPa
Air Output at the Front Of Window	Supported	Supported
GENERAL		
Size	Φ 219 x 379 (mm)	
Housing Inner Size	300 x 200 x 200 (mm) (L x W x H)	
Weight	8kg	
Mounted	wall, pole	

Dimensions

