



EXPLOSION PROOF PRODUCTS 2021



EXPLOSIVE-PROOF CAMERAS, HOUSING, AND ACCESSORIES

2M offers explosion-proof cameras, enclosures, and accessories for hazardous industries requiring video surveillance. Our explosion-proof camera housings can be customized to provide necessary ATEX certified enclosures rated Class 1 Div 1 or Div 2 to any camera brand. Our in-house designers can also develop completely customized explosion-proof systems tailored to fulfill the needs of any unique environment.

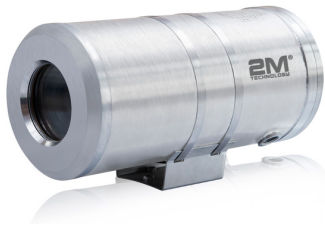
TABLE OF CONTENTS

Explosion Proof Housing.....	3
Explosion Proof Cameras.....	5
Explosion Proof Accessories.....	8





2M Technology explosive proof camera housings can be customized to provide necessary ATEX certified enclosures rated Class 1 Div 1 or Div 2 to any camera brand, for environments involving highly explosive or corrosive materials.



2MEWC / 2MEAC

Explosion proof housing water cooling or air cooling housing unit.

MODEL	SPECIFICATIONS	DIMENSIONS	SS
2MEWC04	Water Cooling Housing Only	Water Cooling	304
2MEWC16		- Outer: 253.4 x 86 x 71.7 (mm) 9.98" x 3.4" x 2.8" in.	316L
2MEAC04	Air Cooling Housing Only	Air Cooling	304
2MEAC16		- Outer: 374 x 163 x 185 (mm) 14.7" x 6.4" x 7.3" in.	316L
		- Internal: 260 x 75 x 75 (mm) 10.2" x 2.9" x 2.9" in.	



2MEW

ATEX Explosion proof housing with wiper

MODEL	SPECIFICATIONS	DIMENSIONS	SS
2MEW04	Housing Only - Atex Certified Ex II2G Ex db IICT6 Gb - AC24V or AC100-240V	- Outer: 524 x 179 x 215 (mm) 20.6" x 7.1" x 8.5" in.	304
2MEW16		- Internal: 250 x 80 x 80 (mm) 9.8" x 3.2" x 3.2" in.	316L



2MEPIR

Network Explosion Proof PTZ Dome Infrared Camera with Wiper System

MODEL	SPECIFICATIONS	DIMENSIONS	SS
2MEPIR04	PTZ Housing Only	- Overall Dimensions: 294 x 294 x 478 mm 11.6" x 11.6" x 18.8" in.	304
2MEPIR16			316L

EXPLOSION PROOF HOUSING



MODEL NUMBER	CAMERA	DIMENSIONS	SS
2MEP04	Housing Only	- Overall: 250 x 250 x 352mm 9.8" x 9.8" x 13.9" in.	304
2MEP16			316L

2MEP

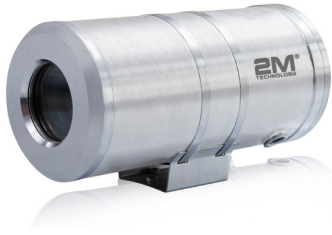
2MP 33X AHD Explosion Proof PTZ Speed Dome Camera



2MEPT

Ex PTZ network camera

MODEL	SPECIFICATIONS	DIMENSIONS	SS
2MEPT04	-PTZ Housing with IR LED Only - ExdII CT6 & DIP A20, TA,T6 - CNEEx No: 13.3111 - SS304/SS316L pan & tilt - Add corrosion proof paint - Vertical: -90° ~ -90° - Rotation speed: 0.1°-45°/s - Wide voltage input: AC24V, AC100-240V - 26.4K/8MPG	- Outer: 502 x 295 x 443 mm 19.8" x 11.6" x 17.4" in. - Internal: 135 x 80 x 80 mm 5.3" x 3.1" x 3.1" in.	304
2MEPT16			316L
2MEPT04-WM	Bracket 304	- Overall: 400 x 170 x 180 mm 15.8" x 6.7" x 7.1" in.	304
2MEPT16-WM	Bracket 316L		316L



2MEWC

Explosion proof housing
water cooling or air cooling
housing unit.

MODEL	SPECIFICATIONS	DIMENSIONS	SS
2MEWC04-T5MZ	5MP, Analog, Motorized Lens 2.8-12mm	Water Cooling	304
2MEWC04-IP4MZ	4MP, IP, 2.8-12mm Motorized Lens, POE		
2MEWC04-IP4KZ	8MP/4K, IP 2.8-12mm Motorized Lens, POE		
2MEWC16-T5MZ	HD Analog, 5MP, TVI, CVI, AHD, CVBS, Motorized Lens 2.8-12mm	- Outer: 253.4 x 86 x 71.7 (mm) 9.98" x 3.4" x 2.8" in.	316L
2MEWC16-IP4MZ	4MP, IP, 2.8-12mm Motorized Lens, POE	- Internal: 260 x 75 x 75 (mm) 10.2" x 2.9" x 2.9" in.	
2MEWC16-IP4KZ	8MP/4K, IP, 2.8-12mm, Motorized Lens, POE		
2MEAC04-T5MZ	HD Analog 5MP, TVI, CVI, AHD, CVBS, Motorized Lens 2.8-12mm	Air Cooling	304
2MEAC04-IP4MZ	4MP, IP, 2.8-12mm Motorized Lens, POE		
2MEAC04-IP4KZ	8MP/4K, IP, 2.8-12mm Motorized Lens, POE		
2MEAC16-T5MZ	HD Analog, 5MP, TVI, CVI, AHD, CVBS, Motorized Lens 2.8-12mm	- Outer: 253.4 x 86 x 71.7 (mm) 9.98" x 3.4" x 2.8" in.	316L
2MEAC16-IP4MZ	4MP Resolution IP Camera WDR, 3D DNR, ONVIF 2.8-12mm Motorized Lens POE	- Internal: 260 x 75 x 75 (mm) 10.2" x 2.9" x 2.9" in.	
2MEAC16-IP4KZ	8MP/4K Resolution IP Camera WDR, 3D DNR, ONVIF 2.8-12mm Motorized Lens POE		



2MECA

Explosion proof housing
ATEX explosion housing with wiper

MODEL	SPECIFICATIONS	DIMENSIONS/GENERAL	SS
2MEW04-T5MZ	HD Analog 5 MP Resolution WDR, 3D DNR TVI, CVI, AHD, CVBS, Motorized Lens 2.8-12mm	- ATEX Certified Ex II2G Ex db IICT6 Gb - AC24V or AC100-240V	304
2MEW04-IP4MZ	4 MP Resolution IP Camera WDR, 3D DNR, ONVIF 2.8-12mm Motorized Lens POE		
2MEW04-IP4KZ	8 MP/4K Resolution IP Camera WDR, 3D DNR, ONVIF 2.8-12mm Motorized Lens POE		
2MEW16-T5MZ	HD Analog Coaxial 5 MP Resolution WDR, 3D DNR TVI, CVI, AHD, CVBS, Motorized Lens 2.8-12mm	- Outer: 524 x 179 x 215 (mm) 20.6" x 7.1" x 8.5" in.	316L
2MEW16-IP4MZ	4 MP Resolution IP Camera WDR, 3D DNR, ONVIF 2.8-12mm Motorized Lens POE	- Internal: 250 x 80 x 80 (mm) 9.8" x 3.2" x 3.2" in.	
2MEW16-IP4KZ	8 MP/4K Resolution IP Camera WDR, 3D DNR, ONVIF 2.8-12mm Motorized Lens POE		



2MEBS

Explosion proof infrared camera

MODEL	SPECIFICATIONS	DIMENSIONS/GENERAL	SS
2MEBS04-T5MZ	HD Analog 5 MP resolution WDR, 3D DNR TVI, CVI, AHD, CVBS, motorized lens 2.8-12mm	- Ex dIICT6 Gb/ Ex tD A21 IP68 T80°C	304
2MEBS04-IP4MZ	4 MP Resolution IP camera WDR, 3D DNR, ONVIF 2.8-12mm motorized lens POE		
2MEBS04-IP4KZ	8 MP/4K Resolution IP camera WDR, 3D DNR, ONVIF 2.8-12mm motorized lens POE		
2MEBS16-T5MZ	HD Analog Coaxial 5 MP Resolution WDR, 3D DNR TVI, CVI, AHD, CVBS, motorized lens 2.8-12mm	- Overall: 319 x 144 x 168 mm 12.6" x 5.7" x 6.6" in.	316L
2MEBS16-IP4MZ	4 MP Resolution IP camera WDR, 3D DNR, ONVIF 2.8-12mm motorized lens POE		
2MEBS16-IP4KZ	8 MP/4K Resolution IP camera WDR, 3D DNR, ONVIF 2.8-12mm motorized lens POE		

EXPLOSION PROOF CAMERAS



2MEB

Explosion proof mini camera

MODEL	SPECIFICATIONS	DIMENSIONS/GENERAL	SS
2MEB04-IP4M	4 MP IP Camera, WDR, 3D DNR, ONVIF 3.6 Fixed Lens POE	-IR 0 - 30 meter, POE/12VDC - Overall: 168 x 144 x 167 mm 6.6" x 5.9" x 5.8" in.	304
2MEB16-IP4M			316L
2MEB04-IP4K	8 MP/4K IP Camera WDR, 3D DNR, ONVIF3.6 Fixed Lens POE		304
2MEB16-IP4K			316L
2MEB04-T5M	HD Analog Coaxial 5MP, WDR, 3D DNR TVI, CVI, AHD, CVBS, 3.6 Fixed Lens		304
2MEB16-T5M			316L
2MEB04-MW	Camera Wall Mount Adapter	- Overall: 68 x 150 x 148mm 6.6" x 5.9" x 5.8" in.	304
2MEB16-MW			316L



2MEP

2MP 33X AHD Explosion Proof PTZ Speed Dome Camera

MODEL NUMBER	CAMERA	DIMENSIONS	SS
2MEP04-IP2M33X	2 MP IP WDR, 3D DNR, ONVIF 33X Optical Zoom	- Overall: 250 x 250 x 352mm 9.8" x 9.8" x 13.9" in.	304
2MEP16-IP2M33X			316L
2MEP04-IP4M22X	4 MP IP WDR, 3D DNR, ONVIF 22X Optical Zoom		304
2MEP16-IP4M22X			316L
2MEP04-T2M33X	2 MP HD Analog AHD, WDR, 3D DNR, 33X Optical Zoom Lens, AC24V		304
2MEP16-T2M33X			316L



2MEPIR

Network Explosion Proof PTZ Dome Infrared Camera with Wiper System

MODEL	SPECIFICATIONS	DIMENSIONS	SS
2MEPIR04-IP2M33X	2 MP IP WDR, 3D DNR ONVIF 33X Optical Zoom Lens, Infrared Day Night Vision	- Overall Dimensions: 294 x 294 x 478 mm 11.6" x 11.6" x 18.8" in.	304
2MEPIR16-IP2M33X			316L
2MEPIR04-IP4M22X	4 MP IP WDR, 3D DNR, ONVIF 22X Optical Zoom Lens, Infrared Day Night Vision		304
2MEPIR16-IP4M22X			316L
2MEPIR04-T2M33X	2MP HD Coaxial Analog AHD, WDR, 3D DNR, 33X Optical Zoom Lens, AC24V, Infrared Day Night Vision		304
2MEPIR16-T2M33X			316L



2MEPT

Ex PTZ network camera

Bracket for 2MEPT



MODEL	SPECIFICATIONS	DIMENSIONS/ GENERAL	SS
2MEPT04-TH	PTZ Housing with Germanium Glass and IR LED		304
2MEPT16-TH			316L
2MEPT04-4M22X	4 MP IP WDR, 3D DNR, ONVIF 22X Optical Zoom Lens, Infrared Day Night Vision	- ExdII CT6 & DIP A20, TA,T6	304
2MEPT16-4M22X		- CNEx No: 13.3111	316L
2MEPT04-4K38X	8 MP/4K Resolution IP Camera WDR, 3D DNR, ONVIF 38X Zoom Camera	- SS304/SS316L pan & tilt	304
2MEPT16-4K38X		- Add corrosion proof paint	316L
2MEPT04-TH6435MM	Thermal Core with Germanium Glass 640 x 512 pixel, 17µm VOx FPA pixels, 35mm Lens	- Vertical: -90° ~ -90° - Rotation speed: 0.1°- 45°/s	304
2MEPT16-TH6435MM	Thermal Core with Germanium Glass 640 x 512 pixel. 17µm VOx FPA pixels, 35mm Lens	- Wide voltage input: AC24V, AC100-240V - 26.4K / 8MPG	316L
2MEPT04-TH6450MM	Thermal Core with Germanium Glass 640 x 512 pixel. 17µm VOx FPA pixels, 50mm Lens	- Overall: 502 x 295 x 443 mm (19.8" x 11.6" x 17.4" in.)	304
2MEPT16-TH6450MM	Thermal core with germanium glass 640 x 512 pixel. 17µm VOx FPA pixels, 50mm lens		316L
2MEPT04-WM	Bracket 304	- Overall: 400 x 170 x 180 mm	304
2MEPT16-WM	Bracket 316L	15.7" x 6.7" x 7.1" in.	316L

EXPLOSION PROOF ACCESSORIES



2MEWB

Wall bracket

MODEL	SPECIFICATIONS	DIMENSIONS	SS
2MEWB04	Stainless Steel Wall Mount 2MEWC, 2MEAC, 2MECA, EMEW, 2MEBS	399 x 150 x 160mm 15.7" x 5.9" x 6.3" in.	304
2MEWB16			316L



2MEQC

Explosion proof quick aviation connector

MODEL NUMBER	SPECIFICATIONS	DIMENSIONS	SS
2MEQC-04-T	- Exd II CT6 - CNEx.12.3716 - Stainless Steel 304, 316L - 2 pcs G 3/4 Connector - IP65	247 x 86 x 100mm 9.7" x 3.3" x 3.9" in.	304
2MEQC-04-IP	- AC220V input - 2kg / 4.4 lbs - 7 core for AV signal, 12 core for network signal		316L



2MEJBXX-16

ATEX, IECEX Certified Explosion Proof Junction Box

MODEL	SPECIFICATIONS	DIMENSIONS	SS
2MEB04-16	- Stainless steel 304/316L - ATEX Certified Ex II2G Ex db IICT6 Gb, Ex II 2D Ex tb IIIC T80°C Db	- Outer: 413 x 397 x 183mm 16.2" x 15.6" x 7.2" in.	304
2MEJB16-16	- 4 pcs threaded holes, M25 x 1.5 - Net weight: 13.2 kg	- Internal: 230 x 230 x 120mm 9" x 9" x 4.7" in.	316L

XX – Stainless steel rating



2MEJBXX-8

ATEX, IECEX Certified Explosion Proof Junction Box

MODEL	SPECIFICATIONS	DIMENSIONS	SS
2MEJB04-8	- Stainless steel 304/316L - ExdII CT6, Gb/ Ex t D A21 IP68 T80°C	- Outer: 187 x 84mm 7.3" x 3.3" in.	304
2MEJB16-8	- CNEx16.1481 - 4pcs threaded holes, Glands: G3/4 - Weight: 3.5kg / 7.7 lbs	- Internal: 100 x 75mm 3.94" x 2.95" in.	316L

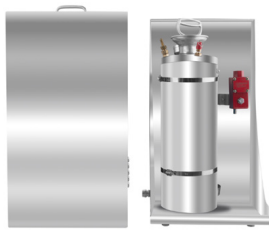
XX – Stainless steel rating



2MEFT

Explosion proof flexibility tube

MODEL	SPECIFICATIONS	DIMENSIONS	SS
2MEFT04-5F	<ul style="list-style-type: none"> - Ex e IIC Gb - 20°C+60°C / 68°F+140°F - 1kg / 2.2 lbs 	- Outer: 16 x 1500mm 0.62 x 59 in.	304
2MEFT16-5F		- Inner: 25 x 1500mm 0.98 x 59 in.	316L



2MEWT16-10

Washing tank

MODEL	SPECIFICATIONS	DIMENSIONS	SS
2MEWT16-10	<ul style="list-style-type: none"> - Water spray form: atomizing with water tube, with nozzle - Control way: RS485, by preset - Voltage: AC24V/DC24V/AC220V - Apparent power: 30VA@24V1.25A - Mounted way: wall, pole mounted 	400 x 236 x 716mm 15.76 x 9.29 x 28.19 in.	316L



802 Greenview Dr.
Grand Prairie TX. 75050 USA
Toll Free 1-866-708-5401
Fax (+1) 972-999-4113
Sales@2MTechnology.net
or visit us at www.2mtechnology.net