



Specifications:

Operating Ambient Temperature: -40°C ~ 60°C (-40°F ~ 140°F),
Humidity: ≤95% RH (non-condensing)

Storage Environment: -30°C ~ 60°C (-22°F ~ 140°F),
Humidity: ≤95% RH (non-condensing)

Surge Protection: 6KV

Ingress Protection: IP66, IP68 (2m 2h), IP69

Power: DC 12V±25%, PoE (IEEE 802.3af)/ AC100-240V

Power Consumption: Max 8.5W

Protection Rating:

- Ex db IIC T6 Gb/Ex tb IIIC T80°C Db
- II 2 G Ex db II C T6 Gb
- II 2 D Ex tb IIIC T80°C Db

Dimensions (W x H x L): 270.50mm × 166.00mm × 160.00mm (10.6" × 6.5" × 6.3")

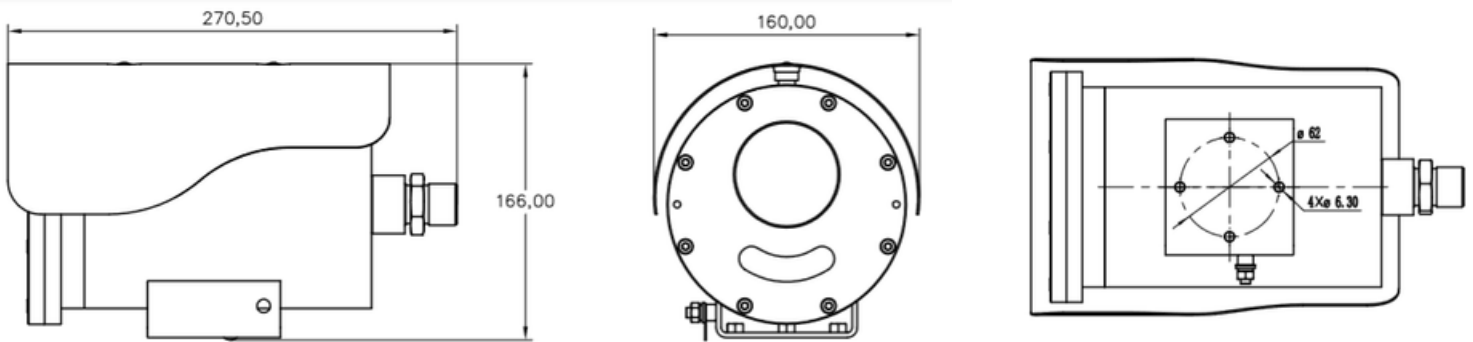
Net Weight: 5.6 kg (12.34 lb.)

Gross Weight: 6.5 kg (14.33 lb.)

Material: 304/316 Stainless steel

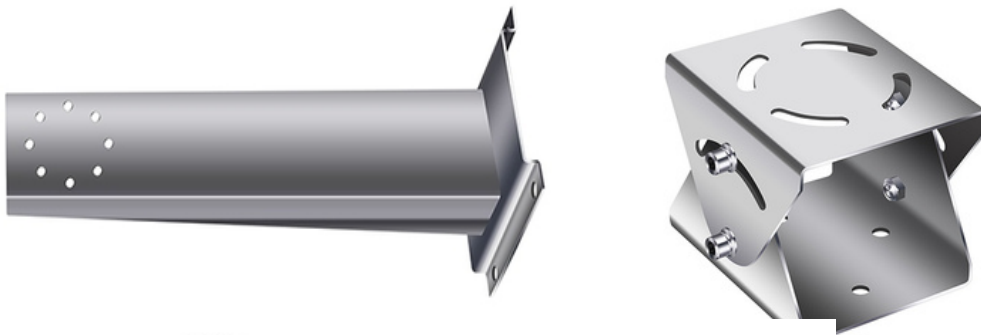
Heater Control: Built-in (optional)

Drawings:

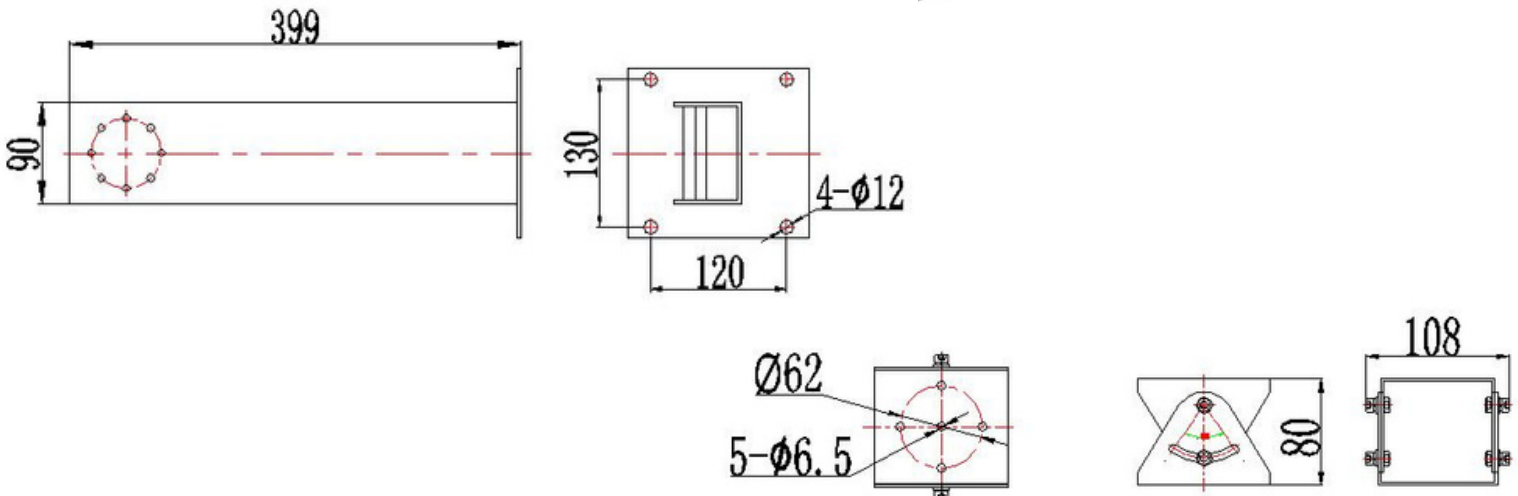


Accessories:

Wall bracket with adaptor



Max Loading: 20kg
 Gross Weight: 2.5kg

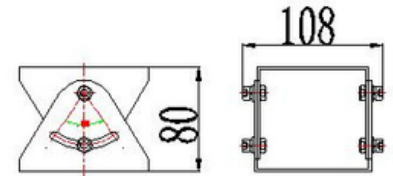
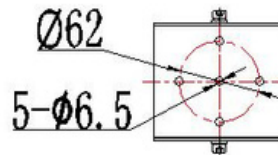
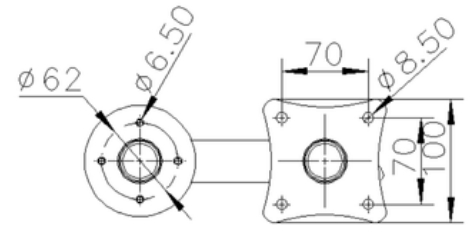
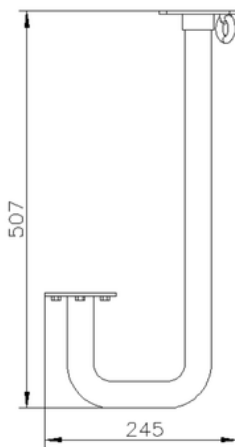


Ceiling Bracket & Mount Adaptor

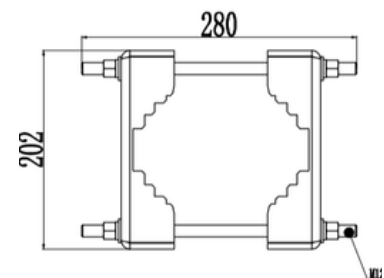
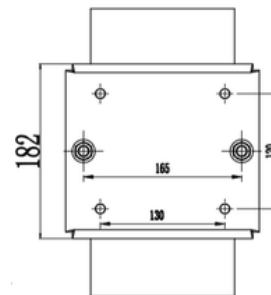
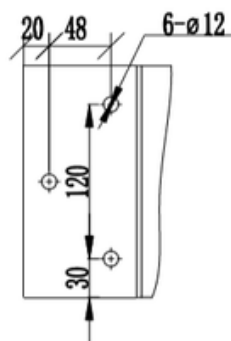
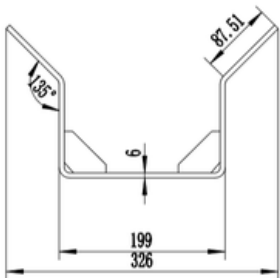
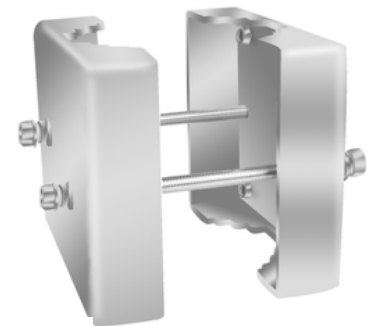
Gross Weight: 0.8 kg
 Net Weight: 0.6 kg



Max Loading: 30 kg
 Gross Weight: 3 kg
 Net Weight: 2.5 kg
 Flexible Joint: Yes



Corner bracket & Pole mount adaptor



Max Loading: 100 kg
 Gross Weight: 6 kg
 Net Weight: 5.4 kg
 Overall Dimension: 326 x 184 x 180 mm

Gross Weight: 7.1 kg
 Net Weight: 6.6 kg
 Overall Dimension: 280 x 182 x 202 mm