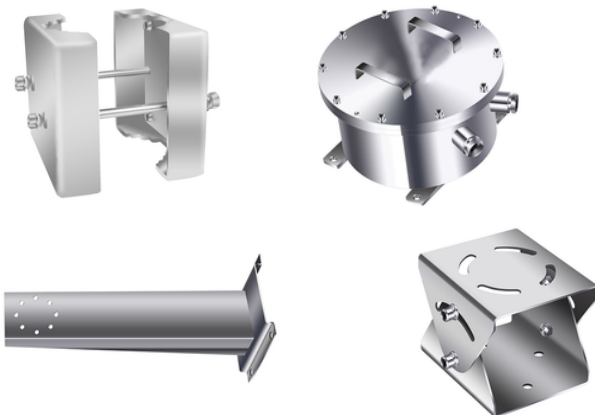




Features

- Applicable for Gas Zone 1, Zone 2, Class II A, IIB, IIC, T1-T6 group, Dust Zone 21, 22.
- Stainless steel 304 or 316L enclosure
- Surface optional: electro-polished or painted
- Weather Proof IP68(2m/2h)
- Wide voltage input: AC100-240V or AC24V or DC24V or PoE++
- Strong tempered glass, fit for a hydrofluoric acid area
- Intelligent window defroster design
- Equipped with infrared light for night vision
- Equipped with a wiper to keep the window clean
- Auto temperature adjust kit for an aggressive area
- High-precision wiper, supports user-defined
- Fit for various brand cameras
- Wall, pole, ceiling or corner mounted way

Accessories



Specifications

GENERAL SPECIFICATIONS	
Atmospheric Pressure	86 kPa to 110 kPa
Operating Humidity	≤ 95 % non-condensing
Operating Temperature	-40 °C to 60 °C (-49 °F to 140 °F)
Protection Level	<ul style="list-style-type: none"> • Ex d IIC T6 Gb explosion-proof marking • IP68, NEMA-6P enclosure rating
Dimensions (L x W x H)	484 mm × 172 mm × 286 mm
Wavelength	850 nm
Net Weight	13 kg
Material	Stainless steel 304/316L
Heater Control	On at 1 °C ± 3 °C (34 °F ± 5 °F) (optional)
Voltage	AC100V~AC240V or DC24V or AC24V or POE++
Power consumption	≤ 36W
Wiper system	Control by RS485
Cable	integrated cable
Light control	Auto turn on/ off, sync with camera day and night
Surge protect	Optional, TVS6000V surge protect
Optical Fibre output	multi-mode single fiber or single mode single fibre Tx1310, Rx1550nm, FC connector
Optical Video signal	1-way video output
Optional network signal	RJ45
Optical audio	1-way input, 1-way output
Optical alarm	2-way alarm input, 1-way alarm output

Dimensions

