



Features

- ATEX, IECEx certified for Gas Zone 1, Zone 2; Dust Zone 21, Zone 22
- Exd II CT6 Gb/ Ex tD A21 IP68 T80°C hazardous rating
- Stainless steel 304 or 316L
- Optional electropolished or corrosion resistant paint finish
- IP66, IP68 (2m/2h) enclosure protection
- Powerful 32x optical zoom and accurate pan/tilt zoom performance
- 1/2.8" 4 Megapixel STARVIS™ CMOS
- Max. 25/30fps@4M
- Supports POE+
- All-in-one solution for capturing long distance video surveillance for outdoor applications
- Starlight technology fits for dark, low-light applications
- True WDR for applications with direct sunlight or glare
- Automatically filters out false alarms caused by animals, rustling leaves, bright lights, etc.
- Automatically tracks an object in motion and keep it in the scene
- Smart H.265+ technology reduces bit rate and storage requirements by up to 70% when compared to standard H.265 video compression
- Supports wall and ceiling mounting
- Optical fiber output version available

Applications

The explosion proof speed dome camera is applicable to Zone 1 and Zone 2 hazardous areas where explosive mixture of group IIA, IIB, IIC, T1~T6 gases, vapors and air may exist, Zone 21 and Zone 22 hazardous areas where explosive dust may exist, e.g. refining and chemical industry, oil extraction, gas production, fireworks production, grain production and storage, petrol station, etc.

Specifications

CAMERA		
Image Sensor	1/2.8" CMOS	
Pixel	4MP	
Max. Resolution	2560 (H) × 1440 (V)	
ROM	4 GB	
RAM	1 GB	
Electronic Shutter Speed	1/1 s–1/30000 s	
Min. Illumination	Color	0.005 Lux@F1.35
	B/W	0.0005 Lux@F1.35
LENS		
Focal Length	4.9–156 mm	
Max. Aperture	F1.35–F4.4	
Field of View	H	61.6°–2.1°
	V	35.1°–1.3°
	D	68.2°–2.5°
Optical Zoom	32x	
Focus Control	Auto / Semi-Auto / Manual	
Close Focus Distance	1 m–1.5 m (3.28 ft–4.92 ft)	
Iris Control	Auto / Manual / Fixed	
DORI Distance	Detect	3120 m (10236.22 ft)
	Observe	1232 m (4041.99 ft)
	Recognize	624 m (2047.24 ft)
	Identify	312 m (1023.62 ft)
PTZ		
Pan/Tilt Range	Pan	0°–360° endless
	Tilt	0°–90°, auto flip 180°
Manual Control Speed	Pan	0.1°/s–350°/s
	Tilt	0.1°/s–250°/s
Preset Speed	Pan	500°/s
	Tilt	500°/s

Specifications

Presets	300	
Tour	8 (up to 32 presets per tour)	
Pattern	5	
Scan	5	
Power-Off Memory	Support	
Idle Motion	Preset / Tour / Pattern / Scanning	
Protocol	DH-S/D; Pelco-P/D (auto recognition)	
GENERAL INTELLIGENCE		
Event Trigger	Motion detection, video tampering, scene changing, network disconnection, IP address conflict, illegal access, and storage anomaly	
IVS	Object Abandoned/Missing	
ARTIFICIAL INTELLIGENCE		
Smart Capture	Support human, motor vehicle, and non-motor vehicle image capture	
Perimeter Protection	Tripwire & intrusion. Support alarm triggering by target types (human & vehicle) and filtering false alarms caused by animals, leaves, lights, etc.	
Face Detection	Support	
Auto Tracking	Support	
SMD PLUS	Support	
VIDEO		
Compression	H.265; H.264B; H.264M; H.264H; MJPEG (Sub Stream); H.265+; H.264+	
Resolution	4MP (2560 × 1440); 3MP (2048 × 1536); 1080P (1920 × 1080); 720P (1280 × 720); D1 (704 × 576 / 704 × 480); CIF (352 × 288 / 352 × 240)	
Frame Rate	Main Stream	4MP / 3MP / 1080P / 1.3MP / 720P (1–25/30 fps)
	Sub Stream 1	D1/CIF (1–25/30 fps)
	Sub Stream 2	720P (1–25/30 fps)

Streaming Capability	3 streams	
Bit Rate Control	Variable / Constant	
Bit Rate	H.264	3 Kbps–20480 Kbps
	H.265	3 Kbps–20480 Kbps
Day/Night	Auto (ICR) / Color / B/W	
BLC	Support	
WDR	120 dB	
HLC	Support	
White Balance	Auto / Indoor / Outdoor / Tracking / Manual / Sodium lamp / Natural light / Street lamp	
Gain Control	Auto / Manual	
Noise Reduction	2D/3D	
Motion Detection	Support	
Region of Interest (ROI)	Support	
Image Stabilization	Electronic	
Defog	Electronic	
Digital Zoom	16x	
Flip	180°	
Privacy Masking	Up to 24 areas, and up to 8 areas in the same view	
S/N Ratio	≥55 dB	
OPTIONAL AUDIO		
Compression	G.711a; G.711Mu; G.726; AAC; MPEG2-Layer2; G722.1; G729; G723	
NETWORK		
Ethernet	RJ-45 (10/100Base-T)	
Protocol	IPv4; IPv6; HTTP; HTTPS; 802.1x; Qos; FTP; SMTP; UPnP; SNMPv1/v2c/v3 (MIB-2); DNS; DDNS; NTP; RTSP; RTP; TCP; UDP; IGMP; ICMP; DHCP; PPPoE; ARP; RTCP	

Specifications

Interoperability	ONVIF Profile S, Profile G, Profile T; CGI	
Streaming Method	Unicast / Multicast	
User/Host	20 (total bandwidth 64M)	
Storage	FTP; Micro SD card (256 GB); NAS	
Browser	IE7 and later versions; Chrome 42 and earlier versions; Firefox 52 and earlier versions; Safari	
Management Software	Smart PSS; DSS; DMSS; Easy4ip; IVSS	
Mobile Phone	IOS, Android	
CERTIFICATION		
Certifications	ATEX, IECEx certified	
Explosion-Proof Certification	DNV 21 ATEX 38340X IECEx DNV 21.0048X	
ATEX Ex-Proof Marking	With Optical Fiber	II 2 G Ex db op pr IIC T6 Gb II 2 D Ex tb op pr IIIC T80 °C Db
	Without Optical Fiber	II 2 G Ex db IIC T6 Gb II 2 D Ex tb IIIC T80 °C Db
IECEx Ex-Proof Marking	With Optical Fibre	Ex db IIC T6 Gb Ex tb IIIC T80°C Db
	Without Optical Fibre	Ex db op pr IIC T6 Gb Ex tb op pr IIIC T80°C Db

OPTIONAL PORT

Audio Input	1
Audio Output	1 (LINE OUT; bare wire)
Two-Way Audio	Support
Alarm I/O	2/1

POWER

Power Supply	DC24V/2.5A PoE+ (802.3at)	
Power Consumption	Basic	10 W
	Max	16 W

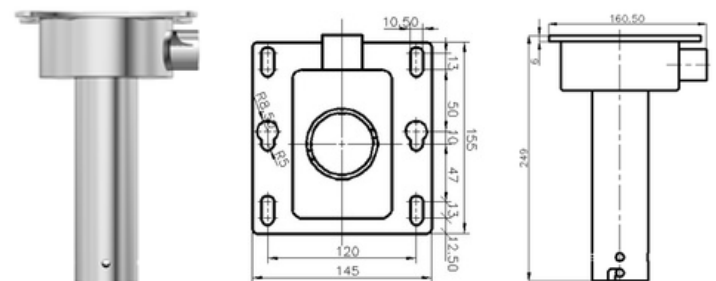
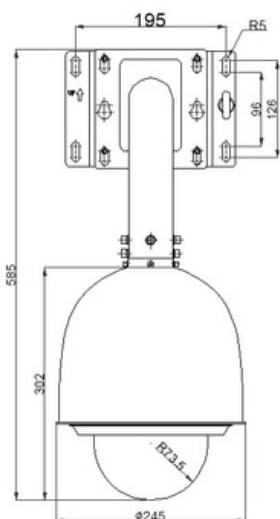
ENVIRONMENT

Operating Temperature	-40°C to +60°C (-40°F to +140°F)
Operating Humidity	≤ 95%
Air Pressure	80~110 kPa
Protection	IP66, IP68 (2m/2h)

STRUCTURE

Dimensions (without bracket)	245 × 245 × 302 mm (9.6" × 9.6" × 11.9" in)
Weight (without bracket)	13.5 kg (29.8 lbs)
Cable Thread Hole	1pcs M27×1.25 or M25×1.5
Enclosure Material	Stainless Steel 304 or 316L
Sunshade	Support

Dimensions (with Wall Bracket)



Ceiling Mount Bracket & Dimensions



Wall Bracket